



MANDRINERIA PER MACCHINE TRADIZIONALI E CNC PER LA LAVORAZIONE DEL METALLO



CENTRATORE TRIDIMENSIONALE 3D TASTER



Art. FH3DPUNTA4C-E



Art. FH3DPUNTA8L-E



Art. FH3DCUF-E

ART.	Descrizione
FH3DUNIV-E	Centratore tridimensionale ad orologio precisione 0,01 mm
FH3DPUNTA4C-E	Puntalino ricambio per 3D ø 3 mm tipo corto (27 mm)
FH3DPUNTA8L-E	Puntalino ricambio per 3D ø 6 mm tipo lungo (62 mm)
FH3DCUF-E	Guarnizione per 3D

Confezione: scatola di cartone.



ARTICOLO		€
Mandrini porta pinze ER DIN 6499/B DIN 2080		
0004016	ISO40 H70 ER16	90,90
0004016L	ISO40 H100 ER16	152,70
0004016L130	ISO40 H130 ER16	179,90
0004020	ISO40 H70 ER20	90,90
0004020L	ISO40 H100 ER20	152,70
0004020L130	ISO40 H130 ER20	179,90
0004025	ISO40 H70 ER25	90,90
0004025L	ISO40 H100 ER25	152,70
0004025L130	ISO40 H130 ER25	179,90
0004032	ISO40 H70 ER32	86,60
0004032L	ISO40 H100 ER32	152,70
0004032L130	ISO40 H130 ER32	179,90
0004040	ISO40 H80 ER40	102,80
0004040L130	ISO40 H130 ER40	198,00
0005016	ISO50 H80 ER16	152,70
0005016L	ISO50 H100 ER16	218,00
0005020	ISO50 H80 ER20	152,70
0005020L	ISO50 H100 ER20	218,00
0005025	ISO50 H80 ER25	152,70
0005025L	ISO50 H100 ER25	218,00
0005025L130	ISO50 H130 ER25	249,00
0005032	ISO50 H80 ER32	152,70
0005032L	ISO50 H100 ER32	218,00
0005032L130	ISO50 H130 ER32	249,00
0005040	ISO50 H80 ER40	162,80
0005040L130	ISO50 H130 ER40	286,00



ARTICOLO		€
Mandrini porta frese trascinamento fisso DIN 2080		
0004016TF	ISO40 H45 d16	113,50
0004016TFL	ISO40 H100 d16	164,40
0004022TF	ISO40 H45 d22	113,50
0004022TFL	ISO40 H100 d22	164,40
0004027TF	ISO40 H45 d27	113,50
0004027TFL	ISO40 H100 d27	164,40
0004032TF	ISO40 H50 d32	121,20
0004032TFL	ISO40 H100 d32	174,90
0004040TF	ISO40 H55 d40	141,50
0004040TFL	ISO40 H100 d40	219,00
0005016TF	ISO50 H45 d16	152,50
0005016TFL	ISO50 H100 d16	202,00
0005022TF	ISO50 H45 d22	152,50
0005022TFL	ISO50 H100 d22	202,00
0005027TF	ISO50 H45 d27	152,50
0005027TFL	ISO50 H100 d27	202,00
0005032TF	ISO50 H50 d32	159,10
0005032TFL	ISO50 H100 d32	217,00
0005040TF	ISO50 H50 d40	183,90
0005040TFL	ISO50 H100 d40	241,00

Mandrini porta frese trascinamento frontale e linguetta DIN 2080

0004016U	ISO40 L1=52 d16	119,80
0004016UL	ISO40 L1=100 d16	151,90
0004022U	ISO40 L1=52 d22	119,80
0004022UL	ISO40 L1=100 d22	151,90
0004027U	ISO40 L1=52 d27	119,80
0004027UL	ISO40 L1=100 d27	151,90
0004032U	ISO40 L1=52 d32	126,40
0004032UL	ISO40 L1=100 d32	167,70
0004040U	ISO40 L1=52 d40	143,40
0004040UL	ISO40 L1=100 d40	206,00
0005016U	ISO50 L1=55 d16	143,60
0005016UL	ISO50 L1=100 d16	223,00
0005022U	ISO50 L1=55 d22	143,60



ARTICOLO		€
Mandrini porta frese trascinamento frontale e linguetta DIN 2080		
0005022UL	ISO50 L1=100 d22	223,00
0005027U	ISO50 L1=55 d27	143,60
0005027UL	ISO50 L1=100 d27	223,00
0005032U	ISO50 L1=55 d32	156,30
0005032UL	ISO50 L1=100 d32	249,00
0005040U	ISO50 L1=55 d40	171,30
0005040UL	ISO50 L1=100 d40	270,00



ARTICOLO		€
Mandrini forte serraggio DIN 2080		
0004020FS	ISO40 d20 H60	399,00
0004032FS	ISO40 d32 H80	399,00
0005032FS	ISO50 d32 H80	521,00



ARTICOLO		€
Mandrini riduzione DIN 2080		
00040300	ISO40 riduzione ISO30 H50	173,50
00050400	ISO50 riduzione ISO40 H63	216,00



ARTICOLO		€
Cassetta legno con mandrino porta pinze		
0004032001	ISO40 ER32 + 18 pinze ER32 + chiave per ghiera pag. 50	357,00



ARTICOLO		€
Mandrini porta frese ad inserti DIN 2080		
0004040FI	ISO40 H20 d40	208,00
0005040FI	ISO50 H30 d40	262,00
0005060FI	ISO50 H30 d60	334,00



ARTICOLO		€
Mandrini stelo tenero DIN 2080		
0004063STL	ISO40 D63x250	236,00
0005095STL	ISO50 D97x315	343,00



ARTICOLO		€
Attacchi per mandrini porta punte cilindriche DIN 2080		
00040B12	ISO40 H18 B12	83,58
00040B16	ISO40 H18 B16	83,58
00040B18	ISO40 H18 B18	83,58
00050B12	ISO50 H20 B12	124,30
00050B16	ISO50 H20 B16	124,30
00050B18	ISO50 H20 B18	124,30



ARTICOLO		€
Mandrini riduzione CM per frese DIN 2080 completi di vite		
00040CM1F	ISO40 H50 CM1	128,50
00040CM1FL	ISO40 H115 CM1	254,00
00040CM2F	ISO40 H50 CM2	128,50
00040CM2FL	ISO40 H115 CM2	254,00
00040CM3F	ISO40 H65 CM3	128,50
00040CM3FL	ISO40 H115 CM3	254,00
00040CM4F	ISO40 H95 CM4	139,20
00040CM4FL	ISO40 H165 CM4	352,00
00050CM1F	ISO50 H45 CM1	169,20
00050CM1FL	ISO50 H115 CM1	332,00
00050CM2F	ISO50 H60 CM2	169,20
00050CM2FL	ISO50 H115 CM2	332,00
00050CM3F	ISO50 H65 CM3	169,20
00050CM3FL	ISO50 H115 CM3	332,00
00050CM4F	ISO50 H65 CM4	186,90
00050CM4FL	ISO50 H165 CM4	351,00
00050CM5F	ISO50 H120 CM5	202,00



ARTICOLO		€
Mandrini riduzione CM per punte DIN 2080		
00040CM1P	ISO40 H50 CM1	87,94
00040CM1PL	ISO40 H92 CM1	208,00
00040CM2P	ISO40 H50 CM2	87,94
00040CM2PL	ISO40 H109 CM2	208,00
00040CM3P	ISO40 H65 CM3	87,94
00040CM3PL	ISO40 H129 CM3	208,00



ARTICOLO		€
Mandrini riduzione CM per punta DIN 2080		
00040CM4P	ISO40 H95 CM4	96,34
00040CM4PL	ISO40 H152 CM4	249,00
00050CM1P	ISO50 H45 CM1	143,40
00050CM1PL	ISO50 H96 CM1	222,00
00050CM2P	ISO50 H60 CM2	143,40
00050CM2PL	ISO50 H113 CM2	222,00
00050CM3P	ISO50 H65 CM3	143,40
00050CM3PL	ISO50 H133 CM3	222,00
00050CM4P	ISO50 H70 CM4	160,70
00050CM4PL	ISO50 H163 CM4	261,00
00050CM5P	ISO50 H100 CM5	192,70
00050CM5PL	ISO50 H193 CM5	299,00



ARTICOLO		€
Mandrini porta pinze EOP DIN 6388/B DIN 2080		
00040EOP16	ISO40 H70 EOP16	134,80
00040EOP25	ISO40 H70 EOP25	149,20
00040EOP32	ISO40 H85 EOP32	180,30
00050EOP16	ISO50 H70 EOP16	182,00
00050EOP25	ISO50 H70 EOP25	194,80
00050EOP32	ISO50 H85 EOP32	223,00



ARTICOLO		€
Mandrini porta maschi a cambio rapido DIN 2080		
00040M312	ISO40 H52 GR.1	382,00
00040M820	ISO40 H77 GR.2	429,00
00050M820	ISO50 H79 GR.2	578,00



ARTICOLO		€
Mandrini porta punta integrali DIN 2080		
00040PC13	ISO40 H88 d1-13	332,00
00040PC16	ISO40 H100 d3-16	345,00
00050PC13	ISO50 H85 d1-13	386,00
00050PC16	ISO50 H90 d3-16	413,00



ARTICOLO		€
Mandrini porta frese WELDON DIN 2080		
00040W06	ISO40 H50 d6	83,22
00040W06L	ISO40 H100 d6	118,00
00040W08	ISO40 H50 d8	79,72
00040W08L	ISO40 H100 d8	97,00
00040W10	ISO40 H50 d10	79,72
00040W10L	ISO40 H100 d10	97,00
00040W12	ISO40 H50 d12	79,72
00040W12L	ISO40 H100 d12	97,00
00040W14	ISO40 H50 d14	79,72
00040W14L	ISO40 H100 d14	97,00
00040W16	ISO40 H63 d16	79,72
00040W16L	ISO40 H100 d16	97,00
00040W18	ISO40 H63 d18	79,72
00040W18L	ISO40 H100 d18	97,00
00040W20	ISO40 H63 d20	79,72
00040W20L	ISO40 H100 d20	97,00
00040W25	ISO40 H90 d25	94,58
00040W25L	ISO40 H100 d25	103,00
00040W32	ISO40 H90 d32	98,80
00040W32L	ISO40 H100 d32	132,90
00040W40	ISO40 H90 d40	122,40
00050W06	ISO50 H50 d6	137,10
00050W06L	ISO50 H100 d6	156,30
00050W08	ISO50 H50 d8	128,50
00050W08L	ISO50 H100 d8	147,90
00050W10	ISO50 H63 d10	128,50
00050W10L	ISO50 H100 d10	147,90
00050W12	ISO50 H63 d12	128,50
00050W12L	ISO50 H100 d12	148,10
00050W14	ISO50 H63 d14	128,50



ARTICOLO		€
Mandrini porta frese WELDON DIN 2080		
00050W14L	ISO50 H100 d14	148,10
00050W16	ISO50 H63 d16	128,50
00050W16L	ISO50 H100 d16	148,10
00050W18	ISO50 H63 d18	128,50
00050W18L	ISO50 H100 d18	148,10
00050W20	ISO50 H63 d20	128,50
00050W20L	ISO50 H100 d20	148,10
00050W25	ISO50 H80 d25	143,60
00050W25L	ISO50 H100 d25	162,60
00050W32	ISO50 H85 d32	149,90
00050W32L	ISO50 H100 d32	188,50
00050W40	ISO50 H95 d40	157,20



ARTICOLO		€
Distributori rotanti di refrigerante DIN 2080		
00040W40DRAM	ISO40 d40	1.091,00
00050W40DRAM	ISO50 d40	1.110,00



ARTICOLO		€
Mandrini autoserranti		
020101012	B12 1-10 mm	71,00
020101316	B16 1-13 mm	80,00
3050626	B16 0-16 mm	fuori prod. sostituito da 3050633
3050633	B16 1-16 mm	67,98



ARTICOLO		€
Attacchi conici per mandrini		
020301001	Cono esterno 1 B10	8,00
020301201	Cono esterno 1 B12	8,00
020301601	Cono esterno 1 B16	8,00
020301002	Cono esterno 2 B10	9,00
020301202	Cono esterno 2 B12	9,00
020301602	Cono esterno 2 B16	9,00
020301802	Cono esterno 2 B18	10,00
020301603	Cono esterno 3 B16	11,00
020301803	Cono esterno 3 B18	13,00
020301604	Cono esterno 4 B16	15,00
020301804	Cono esterno 4 B18	15,00



ARTICOLO		€
Bussole di riduzione Cono Morse		
020400201	CM 2-1	10,00
020400301	CM 3-1	12,00
020400302	CM 3-2	12,00
020400401	CM 4-1	14,00
020400402	CM 4-2	14,00
020400403	CM 4-3	15,00
020400502	CM 5-2	32,00
020400503	CM 5-3	32,00
020400504	CM 5-4	32,00



ARTICOLO		€
Bussole di riduzione tipo lungo		
020500201	CM 2-1	21,00
020500202	CM 2-2	26,00
020500203	CM 2-3	34,00
020500301	CM 3-1	32,00
020500302	CM 3-2	30,00
020500303	CM 3-3	34,00
020500304	CM 3-4	67,00
020500402	CM 4-2	41,00
020500403	CM 4-3	42,00
020500404	CM 4-4	76,00
020500405	CM 4-5	121,00
020500503	CM 5-3	80,00
020500504	CM 5-4	79,00
020500505	CM 5-5	89,00



ARTICOLO		€
Mandrini porta frese trascinamento frontale e linguetta MAS BT A		
1114016U	ISO40 H55 d16	107,00
1114016UL	ISO40 H100 d16	141,10
1114016UL130	ISO40 H130 d16	202,00
1114022U	ISO40 H55 d22	107,00
1114022UL	ISO40 H100 d22	141,10
1114022UL130	ISO40 H130 d22	202,00
1114027U	ISO40 H55 d27	107,00
1114027UL	ISO40 H100 d27	141,10
1114027UL130	ISO40 H130 d27	202,00
1114032U	ISO40 H60 d32	120,50
1114032UL	ISO40 H100 d32	152,80
1114032UL130	ISO40 H130 d32	212,00
1114040U	ISO40 H60 d40	137,10
1114040UL	ISO40 H100 d40	171,30
1114040UL130	ISO40 H130 d40	234,00
1115016U	ISO50 H70 d16	149,90
1115016UL	ISO50 H100 d16	187,60
1115016UL130	ISO50 H130 d16	239,00
1115016UL160	ISO50 H160 d16	277,00
1115022U	ISO50 H70 d22	149,90
1115022UL	ISO50 H100 d22	187,60
1115022UL130	ISO50 H130 d22	239,00
1115022UL160	ISO50 H160 d22	277,00
1115027U	ISO50 H70 d27	149,90
1115027UL	ISO50 H100 d27	187,60
1115027UL130	ISO50 H130 d27	239,00
1115027UL160	ISO50 H160 d27	277,00
1115032U	ISO50 H70 d32	160,70
1115032UL	ISO50 H100 d32	196,20
1115032UL130	ISO50 H130 d32	249,00
1115032UL160	ISO50 H160 d32	287,00
1115040U	ISO50 H70 d40	173,50
1115040UL	ISO50 H100 d40	208,00
1115040UL130	ISO50 H130 d40	270,00
1115040UL160	ISO50 H160 d40	313,00


Mandrini forte serraggio MAS BT AD/B

1114020FS	ISO40 H80 d20	375,00
1114032FS	ISO40 H85 d32	392,00
1115032FS	ISO50 H100 d32	555,00

Mandrini riduzione MAS BT A

11140300	ISO40 riduzione ISO30 H70	192,70
11150400	ISO50 riduzione ISO40 H70	222,00

Mandrini porta frese ad inserti MAS BT A

1114040FI	ISO40 H60 d40	208,00
1115040FI	ISO50 H70 d40	273,00
1115060FI	ISO50 H80 d60	334,00

Mandrini stelo tenero MAS BT AD

1114063STL	ISO40 D63x250	236,00
1115095STL	ISO50 D97x315	343,00

Attacchi per mandrini porta punte cilindriche MAS BT AD/B

11140B12	ISO40 H45 B12	83,58
11140B16	ISO40 H45 B16	83,58
11140B18	ISO40 H45 B18	83,58
11150B12	ISO50 H45 B12	124,30
11150B16	ISO50 H45 B16	124,30
11150B18	ISO50 H45 B18	124,30



ARTICOLO		€
Mandrini riduzione CM per frese MAS BT A con vite		
11140CM1F	ISO40 H50 CM1	124,30
11140CM1FL	ISO40 H120 CM1	220,00
11140CM2F	ISO40 H50 CM2	124,30
11140CM2FL	ISO40 H120 CM2	220,00
11140CM3F	ISO40 H75 CM3	124,30
11140CM3FL	ISO40 H135 CM3	220,00
11140CM4F	ISO40 H95 CM4	134,80
11140CM4FL	ISO40 H165 CM4	319,00
11150CM1F	ISO50 H50 CM1	164,90
11150CM1FL	ISO50 H185 CM1	318,00
11150CM2F	ISO50 H50 CM2	164,90
11150CM2FL	ISO50 H185 CM2	318,00
11150CM3F	ISO50 H65 CM3	164,90
11150CM3FL	ISO50 H185 CM3	318,00
11150CM4F	ISO50 H95 CM4	193,20
11150CM4FL	ISO50 H185 CM4	338,00
11150CM5F	ISO50 H120 CM5	336,00


Mandrini riduzione CM per punte MAS BT A

11140CM1P	ISO40 H50 CM1	83,40
11140CM1PL	ISO40 H115 CM1	173,50
11140CM2P	ISO40 H60 CM2	83,40
11140CM2PL	ISO40 H120 CM2	173,50
11140CM3P	ISO40 H76 CM3	83,40
11140CM3PL	ISO40 H140 CM3	173,50
11140CM4P	ISO40 H94,5 CM4	92,14
11140CM4PL	ISO40 H165 CM4	215,00
11150CM1P	ISO50 H45 CM1	139,20
11150CM1PL	ISO50 H120 CM1	209,00
11150CM2P	ISO50 H60 CM2	139,20
11150CM2PL	ISO50 H140 CM2	209,00
11150CM3P	ISO50 H65 CM3	139,20
11150CM3PL	ISO50 H150 CM3	209,00
11150CM4P	ISO50 H95 CM4	156,30
11150CM4PL	ISO50 H180 CM4	307,00
11150CM5P	ISO50 H105 CM5	196,50
11150CM5PL	ISO50 H220 CM5	344,00


Mandrini porta maschi a cambio rapido MAS BT AD/B

11140M312	ISO40 H67 GR.1	283,00
11140M820	ISO40 H93 GR.2	344,00
11150M312	ISO50 H80 GR.1	471,00
11150M820	ISO50 H102 GR.2	489,00

Mandrini porta punte integrali MAS BT AD/B

11140PC13	ISO40 H98 d1-13	332,00
11140PC16	ISO40 H98 d1-16	345,00
11150PC13	ISO50 H109 d1-13	386,00
11150PC16	ISO50 H109 d1-16	413,00

Distributori rotanti di refrigerante MAS BT

11140W32DRA	ISO40 d32	1.110,00
11140W40DRA	ISO40 d40	1.264,00
11150W40DRA	ISO50 d40	1.474,00

Cercacentro analogico AXIS OFFSET

130.00	unità di formato 0,01 mm	353,00
--------	--------------------------	--------

Tastatori centratori meccanici

130.10	tolleranza 0,01 mm	21,00
130.20	tolleranza 0,01 mm	17,00


Centratori con segnale luminoso

€	130.30	tolleranza 0,01 mm	92,00
---	--------	--------------------	-------




ARTICOLO €

Centratori con segnale luminoso

	130.31	tolleranza 0,01 mm	98,00
---	---------------	--------------------	--------------

Centratore tastatore con segnale luminoso e sonoro

	130.33	sfera Ø 10 mm	100,00
---	---------------	---------------	---------------


Centratore tastatore meccanico amagnetico

	130.A10	Ø 10 mm	45,00
---	----------------	---------	--------------


Mandrini porta frese trascinamento frontale e linguetta DIN 69871 A

3334016U	ISO40 H55 d16	107,00
3334016UL	ISO40 H100 d16	141,10
3334016UL130	ISO40 H130 d16	202,00
3334022U	ISO40 H55 d22	107,00
3334022UL	ISO40 H100 d22	141,10
3334022UL130	ISO40 H130 d22	212,00
3334027U	ISO40 H55 d27	107,00
3334027UL	ISO40 H100 d27	141,10
3334027UL130	ISO40 H130 d27	202,00
3334032U	ISO40 H60 d32	120,50
3334032UL	ISO40 H100 d32	152,80
3334032UL130	ISO40 H130 d32	212,00
3334040U	ISO40 H60 d40	137,10
3334040UL	ISO40 H100 d40	171,30
3334040UL130	ISO40 H130 d40	234,00
3335016U	ISO50 H55 d16	149,90
3335016UL	ISO50 H100 d16	187,60
3335016UL130	ISO50 H130 d16	239,00
3335016UL160	ISO50 H160 d16	277,00
3335022U	ISO50 H55 d22	149,90
3335022UL	ISO50 H100 d22	187,60
3335022UL130	ISO50 H130 d22	239,00
3335022UL160	ISO50 H160 d22	277,00
3335027U	ISO50 H55 d27	149,90
3335027UL	ISO50 H100 d27	187,60
3335027UL130	ISO50 H130 d27	239,00
3335027UL160	ISO50 H160 d27	277,00
3335032U	ISO50 H55 d32	160,70
3335032UL	ISO50 H100 d32	196,20
3335032UL130	ISO50 H130 d32	249,00
3335032UL160	ISO50 H160 d32	287,00
3335040U	ISO50 H55 d40	173,50
3335040UL	ISO50 H100 d40	208,00
3335040UL130	ISO50 H130 d40	270,00
3335040UL160	ISO50 H160 d40	313,00


Mandrini forte serraggio DIN 69871 A

	3334020FS	ISO40 H75 d20	375,00
	3334032FS	ISO40 H95 d32	392,00
	3335032FS	ISO50 H85 d32	478,00

Mandrini riduzione DIN 69871


	33340300	ISO40 riduzione ISO30 H60	192,70
	33350400	ISO50 riduzione ISO40 H70	222,00

Mandrini porta frese ad inserti DIN 69871 A


	3334040FI	ISO40 H60 d40	208,00
	3335040FI	ISO50 H70 d40	273,00
	3335060FI	ISO50 H70 d60	334,00

ARTICOLO €

Mandrini stelo tenero DIN 69871 A

	3334063STL	ISO40 D63x250	236,00
	3335095STL	ISO50 D97x315	343,00

Attacchi per mandrini porta punte cilindriche DIN 69871 A

	33340B12	ISO40 H40 B12	83,58
	33340B16	ISO40 H40 B16	83,58
	33340B18	ISO40 H40 B18	83,58
	33350B12	ISO50 H40 B12	124,30
	33350B16	ISO50 H40 B16	124,30
	33350B18	ISO50 H40 B18	124,30

Mandrini riduzioni CM per frese DIN 69871 A completi di vite

33340CM1F	ISO40 H50 CM1	124,30
33340CM1FL	ISO40 H120 CM1	220,00
33340CM2F	ISO40 H50 CM2	124,30
33340CM2FL	ISO40 H120 CM2	220,00
33340CM3F	ISO40 H70 CM3	124,30
33340CM3FL	ISO40 H135 CM3	220,00
33340CM4F	ISO40 H95 CM4	124,30
33340CM4FL	ISO40 H165 CM4	318,00
33350CM1F	ISO50 H50 CM1	164,90
33350CM2F	ISO50 H50 CM2	164,90
33350CM2FL	ISO50 H170 CM2	318,00
33350CM3F	ISO50 H65 CM3	164,90
33350CM3FL	ISO50 H170 CM3	318,00
33350CM4F	ISO50 H95 CM4	193,20
33350CM4FL	ISO50 H170 CM4	338,00
33350CM5F	ISO50 H120 CM5	231,00
33350CM5FL	ISO50 H220 CM5	374,00

Mandrini riduzioni CM per punte DIN 69871 A

33340CM1P	ISO40 H50 CM1	83,40
33340CM1PL	ISO40 H120 CM1	173,50
33340CM2P	ISO40 H50 CM2	83,40
33340CM2PL	ISO40 H120 CM2	173,50
33340CM3P	ISO40 H76 CM3	83,40
33340CM3PL	ISO40 H135 CM3	173,50
33340CM4P	ISO40 H95 CM4	92,14
33340CM4PL	ISO40 H165 CM4	214,00
33350CM1P	ISO50 H45 CM1	139,20
33350CM1PL	ISO50 H120 CM1	209,00
33350CM2P	ISO50 H60 CM2	139,20
33350CM2PL	ISO50 H140 CM2	209,00
33350CM3P	ISO50 H65 CM3	139,20
33350CM3PL	ISO50 H150 CM3	209,00
33350CM4P	ISO50 H95 CM4	156,30
33350CM4PL	ISO50 H180 CM4	307,00
33350CM5P	ISO50 H105 CM5	196,50
33350CM5PL	ISO50 H220 CM5	344,00

Mandrini porta maschi a cambio rapido DIN 69871 AD/B

	33340M312	ISO40 H60 GR.1	283,00
	33340M820	ISO40 H92 GR.2	344,00
	33350M312	ISO50 H62 GR.1	471,00
	33350M820	ISO50 H83 GR.2	484,00

Mandrini porta punte integrali DIN 69871 A

	33340PC13	ISO40 H85 d1-13	332,00
	33340PC16	ISO40 H106 d3-16	345,00
	33350PC13	ISO50 H87 d1-13	386,00
	33350PC16	ISO50 H106 d3-16	413,00

Mandrini porta punte integrali chiave esagonale DIN 69871 AD/B

	33340PC13I	ISO40 H88 d1-13	500,00
	33340PC16I	ISO40 H93 d3-16	521,00
	33350PC13I	ISO50 H88 d1-13	540,00
	33350PC16I	ISO50 H97 d3-16	590,00

ARTICOLO	€
----------	---

Distributori rotanti di refrigerante DIN 69871


33340W32DRA	ISO40 d32	1.110,00
33350W40DRA	ISO50 d40	1.474,00

Mandrini porta pinze ER DIN 6499/B DIN 69893

44450A16	HSK50/A H70 ER16	187,60
44450A16L	HSK50/A H100 ER16	180,30
44450A25	HSK50/A H70 ER25	187,60
44450A25L	HSK50/A H100 ER25	180,30
44450A32	HSK50/A H70 ER32	187,60
44450A32L	HSK50/A H100 ER32	180,30
44463A16	HSK63/A H75 ER16	176,20
44463A16L	HSK63/A H100 ER16	180,30
44463A16L160	HSK63/A H160 ER16	232,00
44463A20	HSK63/A H75 ER20	176,20
44463A20L	HSK63/A H100 ER20	180,30
44463A20L160	HSK63/A H160 ER20	232,00
44463A25	HSK63/A H75 ER25	176,20
44463A25L	HSK63/A H100 ER25	180,30
44463A25L160	HSK63/A H160 ER25	232,00
44463A32	HSK63/A H75 ER32	176,20
44463A32L	HSK63/A H100 ER32	180,30
44463A32L160	HSK63/A H160 ER32	232,00
44463A40	HSK63/A H80 ER40	190,80
44463A40L	HSK63/A H120 ER40	187,30
44463A40L160	HSK63/A H160 ER40	247,00
444100A16L	HSK100/A H100 ER16	247,00
444100A16L160	HSK100/A H160 ER16	297,00
444100A20	HSK100/A H70 ER20	Rich. Offerta
444100A20L	HSK100/A H100 ER20	247,00
444100A20L160	HSK100/A H160 ER20	297,00
444100A25	HSK100/A H75 ER25	Rich. Offerta
444100A25L	HSK100/A H100 ER25	247,00
444100A25L160	HSK100/A H160 ER25	297,00
444100A32	HSK100/A H80 ER32	Rich. Offerta
444100A32L	HSK100/A H100 ER32	247,00
444100A32L160	HSK100/A H160 ER32	297,00
444100A40	HSK100/A H90 ER40	Rich. Offerta
444100A40L160	HSK100/A H160 ER40	313,00

Mandrini porta frese trascinamento fisso DIN 69893

44450A16TF	HSK50/A H50 d16	217,00
44450A22TF	HSK50/A H60 d22	217,00
44450A27TF	HSK50/A H60 d27	217,00
44463A16TF	HSK63/A H50 d16	210,00
44463A16TFL	HSK63/A H100 d16	230,00
44463A22TF	HSK63/A H50 d22	210,00
44463A22TFL	HSK63/A H100 d22	230,00
44463A27TF	HSK63/A H60 d27	210,00
44463A27TFL	HSK63/A H100 d27	230,00
44463A32TF	HSK63/A H60 d32	225,00
44463A32TFL	HSK63/A H100 d32	257,00
44463A40TF	HSK63/A H60 d40	253,00
44463A40TFL	HSK63/A H100 d40	274,00
444100A16TF	HSK100/A H50 d16	280,00
444100A16TFL	HSK100/A H100 d16	309,00
444100A22TF	HSK100/A H50 d22	280,00
444100A22TFL	HSK100/A H100 d22	309,00
444100A27TF	HSK100/A H50 d27	280,00
444100A27TFL	HSK100/A H100 d27	309,00
444100A32TF	HSK100/A H50 d32	300,00
444100A32TFL	HSK100/A H100 d32	330,00
444100A40TF	HSK100/A H60 d40	320,00
444100A40TFL	HSK100/A H100 d40	386,00



ARTICOLO	€
----------	---

Mandrini porta frese trascinamento frontale e linguetta DIN 69893


44450A16U	HSK50/A H50 d16	224,00
44450A22U	HSK50/A H50 d22	224,00
44450A27U	HSK50/A H65 d27	224,00
44463A16U	HSK63/A H60 d16	208,00
44463A22U	HSK63/A H60 d22	208,00
44463A27U	HSK63/A H60 d27	208,00
44463A32U	HSK63/A H60 d32	229,00
444100A16U	HSK100/A H60 d16	294,00
444100A22U	HSK100/A H60 d22	294,00
444100A27U	HSK100/A H60 d27	294,00
444100A32U	HSK100/A H60 d32	313,00

Mandrini riduzione CM per frese DIN 69893 completi di vite

44450ACM1F	HSK50/A H100 CM1	216,00
44450ACM2F	HSK50/A H120 CM2	216,00
44450ACM3F	HSK50/A H140 CM3	216,00
44463ACM1F	HSK63/A H100 CM1	212,00
44463ACM2F	HSK63/A H120 CM2	212,00
44463ACM3F	HSK63/A H140 CM3	212,00
44463ACM4F	HSK63/A H160 CM4	227,00
444100ACM2F	HSK100/A H120 CM2	270,00
444100ACM3F	HSK100/A H150 CM3	270,00
444100ACM4F	HSK100/A H170 CM4	293,00
444100ACM5F	HSK100/A H200 CM5	409,00

Mandrini riduzione CM per punte DIN 69893

44450ACM1P	HSK50/A H100 CM1	180,30
44450ACM2P	HSK50/A H120 CM2	180,30
44450ACM3P	HSK50/A H140 CM3	180,30
44463ACM1P	HSK63/A H100 CM1	182,00
44463ACM2P	HSK63/A H120 CM2	182,00
44463ACM3P	HSK63/A H140 CM3	186,40
44463ACM4P	HSK63/A H160 CM4	216,00
444100ACM2P	HSK100/A H120 CM2	264,00
444100ACM3P	HSK100/A H150 CM3	264,00
444100ACM4P	HSK100/A H170 CM4	300,00
444100ACM5P	HSK100/A H200 CM5	413,00

Mandrini per frese attacco filettato DIN 69893

44450AM08L59	HSK50/A M8x59	314,00
44450AM08L84	HSK50/A M8x84	314,00
44450AM08L109	HSK50/A M8x109	325,00
44450AM08L134	HSK50/A M8x134	337,00
44450AM10L59	HSK50/A M10x59	314,00
44450AM10L84	HSK50/A M10x84	314,00
44450AM10L109	HSK50/A M10x109	325,00
44450AM10L134	HSK50/A M10x134	337,00
44450AM12L59	HSK50/A M12x59	314,00
44450AM12L84	HSK50/A M12x84	314,00
44450AM12L109	HSK50/A M12x109	325,00
44450AM12L134	HSK50/A M12x134	337,00
44463AM08L59	HSK63/A M8x59	295,00
44463AM08L84	HSK63/A M8x84	295,00
44463AM08L109	HSK63/A M8x109	326,00
44463AM08L134	HSK63/A M8x134	369,00
44463AM10L59	HSK63/A M10x59	295,00
44463AM10L84	HSK63/A M10x84	295,00
44463AM10L109	HSK63/A M10x109	326,00
44463AM10L134	HSK63/A M10x134	369,00
44463AM10L159	HSK63/A M10x159	386,00
44463AM12L59	HSK63/A M12x59	295,00
44463AM12L84	HSK63/A M12x84	295,00
44463AM12L109	HSK63/A M12x109	326,00
44463AM12L134	HSK63/A M12x134	369,00
44463AM12L159	HSK63/A M12x159	386,00



ARTICOLO		€
Mandrini per frese attacco filettato DIN 69893		
44463AM12L184	HSK63/A M12x184	493,00
44463AM12L209	HSK63/A M12x209	516,00
44463AM16L59	HSK63/A M16x59	295,00
44463AM16L84	HSK63/A M16x84	295,00
44463AM16L109	HSK63/A M16x109	326,00
44463AM16L134	HSK63/A M16x134	369,00
44463AM16L159	HSK63/A M16x159	386,00
44463AM16L184	HSK63/A M16x184	493,00
44463AM16L209	HSK63/A M16x209	516,00
444100AM12L87	HSK100/A M12x87	431,00
444100AM12L137	HSK100/A M12x137	505,00
444100AM12L187	HSK100/A M12x187	643,00
444100AM16L87	HSK100/A M16x87	431,00
444100AM16L137	HSK100/A M16x137	505,00
444100AM16L187	HSK100/A M16x187	643,00
444100AM16L237	HSK100/A M16x237	858,00
Mandrini porta maschi a cambio rapido DIN 69893		
44450AM312	HSK50/A H72 GR.1	617,00
44450AM820	HSK50/A H110 GR.2	735,00
44463AM312	HSK63/A H72 GR.1	694,00
44463AM820	HSK63/A H110 GR.2	763,00
444100AM820	HSK100/A H80 GR.1	1.070,00
444100AM1433	HSK100/A H100 GR.2	1.112,00
Mandrini porta frese WELDON DIN 69893		
44450AW06	HSK50/A H65 d6	187,10
44450AW08	HSK50/A H65 d8	175,90
44450AW10	HSK50/A H65 d10	175,50
44450AW12	HSK50/A H80 d12	175,90
44450AW14	HSK50/A H80 d14	175,90
44450AW16	HSK50/A H80 d16	175,90
44450AW18	HSK50/A H80 d18	175,90
44450AW20	HSK50/A H80 d20	175,90
44450AW25	HSK50/A H105 d25	270,00
44450AW32	HSK50/A H120 d32	313,00
44463AW06	HSK63/A H65 d6	179,40
44463AW06L160	HSK63/A H160 d6	281,00
44463AW08	HSK63/A H65 d8	168,60
44463AW08L160	HSK63/A H160 d8	272,00
44463AW10	HSK63/A H65 d10	168,60
44463AW10L160	HSK63/A H160 d10	272,00
44463AW12	HSK63/A H80 d12	168,60
44463AW12L160	HSK63/A H160 d12	272,00
44463AW14	HSK63/A H80 d14	168,60
44463AW14L160	HSK63/A H160 d14	272,00
44463AW16	HSK63/A H80 d16	168,60
44463AW16L160	HSK63/A H160 d16	272,00
44463AW18	HSK63/A H80 d18	168,60
44463AW18L160	HSK63/A H160 d18	272,00
44463AW20	HSK63/A H80 d20	168,60
44463AW20L160	HSK63/A H160 d20	272,00
44463AW25	HSK63/A H110 d25	192,70
44463AW25L160	HSK63/A H160 d25	288,00
44463AW32	HSK63/A H110 d32	212,00
44463AW32L160	HSK63/A H160 d32	343,00
444100AW06	HSK100/A H80 d6	262,00
444100AW06L160	HSK100/A H160 d6	335,00
444100AW08	HSK100/A H80 d8	257,00
444100AW08L160	HSK100/A H160 d8	324,00
444100AW10	HSK100/A H80 d10	257,00
444100AW10L160	HSK100/A H160 d10	324,00
444100AW12	HSK100/A H80 d12	257,00
444100AW12L160	HSK100/A H160 d12	324,00

ARTICOLO		€
Mandrini porta frese WELDON DIN 69893		
444100AW14	HSK100/A H80 d14	257,00
444100AW14L160	HSK100/A H160 d14	324,00
444100AW16	HSK100/A H100 d16	257,00
444100AW16L160	HSK100/A H160 d16	324,00
444100AW18	HSK100/A H100 d18	257,00
444100AW18L160	HSK100/A H160 d18	324,00
444100AW20	HSK100/A H100 d20	257,00
444100AW20L160	HSK100/A H160 d20	324,00
444100AW25	HSK100/A H100 d25	286,00
444100AW25L160	HSK100/A H160 d25	357,00
444100AW32	HSK100/A H100 d32	294,00
444100AW32L160	HSK100/A H160 d32	407,00
444100AW40	HSK100/A H105 d40	316,00
444100AW40L160	HSK100/A H160 d40	459,00
Mandrini a calettamento a caldo attacco HSK63/A DIN 69893		
44463A06MC	H80 d6	318,00
44463A06MCL120	H120 d6	415,00
44463A06MCL160	H160 d6	458,00
44463A08MC	H80 d8	318,00
44463A08MCL120	H120 d8	415,00
44463A08MCL160	H160 d8	458,00
44463A10MC	H85 d10	318,00
44463A10MCL120	H120 d10	415,00
44463A10MCL160	H160 d10	458,00
44463A12MC	H90 d12	318,00
44463A12MCL120	H120 d12	415,00
44463A12MCL160	H160 d12	458,00
44463A16MC	H95 d16	318,00
44463A16MCL120	H120 d16	415,00
44463A16MCL160	H160 d16	458,00
44463A20MC	H100 d20	318,00
44463A20MCL120	H120 d20	415,00
44463A20MCL160	H160 d20	458,00
Mandrini porta pinze ER DIN 6499/B ghiera mini DIN 69893		
44463A11ML	HSK63/A H100 ER11	270,00
44463A16ML	HSK63/A H100 ER16	270,00
44463A20ML	HSK63/A H100 ER20	270,00
44463A25ML	HSK63/A H100 ER25	270,00
444100A16ML	HSK100/A H100 ER16	337,00
444100A16ML160	HSK100/A H160 ER16	365,00
444100A20ML	HSK100/A H100 ER20	337,00
444100A20ML160	HSK100/A H160 ER20	365,00
444100A25ML	HSK100/A H100 ER25	337,00
444100A25ML160	HSK100/A H160 ER25	365,00
Mandrini porta pinze ER DIN 6499/B DIN 69893		
44463E16L	HSK63/E H100 ER16	180,30
44463E25L	HSK63/E H100 ER25	180,30
44463E32L	HSK63/E H100 ER32	180,30
44463E40L	HSK63/E H100 ER40	204,00
Mandrini forte serraggio DIN 69893		
44463A20FS	HSK63/A H85 d20	707,00
44463A32FS	HSK63/A H110 d32	759,00
444100A32FS	HSK100/A H115 d32	946,00
Mandrini stelo tenero DIN 69893		
44463A63STL	HSK63/A D63x250	344,00
444100A90STL	HSK100/A D97x315	451,00
Mandrini porta punte integrali chiave esagonale DIN 69893		
44463APC13I	HSK63/A H111 d1-13	694,00
44463APC16I	HSK63/A H111 d3-16	729,00
444100APC13I	HSK100/A H111 d1-13	867,00
444100APC16I	HSK100/A H111 d3-16	937,00

ARTICOLO		€
Mandrini porta pinze DIN 6499/B Cono Morse DIN 228/A		
5550216	CM2 ER16	41,80
5550220	CM2 ER20	41,80
5550225	CM2 ER25	41,80
5550232	CM2 ER32	41,80
5550325	CM3 ER25	41,80
5550332	CM3 ER32	41,80
5550340	CM3 ER40	41,80
5550425	CM4 ER25	49,94
5550432	CM4 ER32	49,94
5550440	CM4 ER40	68,50
5550532	CM5 ER32	103,00
5550540	CM5 ER40	111,20

ARTICOLO		€
Mandrini porta frese universali Cono Morse DIN 228/A		
5550216U	CM2 L17	134,50
5550222U	CM2 L19	149,90
5550316U	CM3 L17	151,50
5550322U	CM3 L19	155,00
5550327U	CM3 L21	175,10
5550416U	CM4 L17	188,70
5550422U	CM4 L19	175,10
5550427U	CM4 L21	175,10
5550432U	CM4 L24	209,80

Cassette legno con mandrino porta pinze

	5550432001BIM	CM4 con ghiera BIMAK + 7 pinze ER32 + chiave per ghiera	490,00
	5550432001SER	CM4 con ghiera Serrmac/Famup + 7 pinze ER32 + chiave per ghiera	428,00

Mandrini porta pinze ER32 CM4		
5550432BIM	M60x3 - BIMAK	342,20
5550432SER	M60x2,5 SERRMAC/FAMUP	280,00

Mandrini a calettamento a caldo attacco MAS BT/B		
6664006MC	ISO40 H90 d6	287,00
6664006MCL120	ISO40 H120 d6	352,00
6664006MCL160	ISO40 H160 d6	382,00
6664008MC	ISO40 H90 d8	287,00
6664008MCL120	ISO40 H120 d8	352,00
6664008MCL160	ISO40 H160 d8	382,00
6664010MC	ISO40 H90 d10	287,00
6664010MCL120	ISO40 H120 d10	352,00
6664010MCL160	ISO40 H160 d10	382,00
6664012MC	ISO40 H90 d12	287,00
6664012MCL120	ISO40 H120 d12	352,00
6664012MCL160	ISO40 H160 d12	382,00
6664016MC	ISO40 H90 d16	287,00
6664016MCL120	ISO40 H120 d16	352,00
6664016MCL160	ISO40 H160 d16	382,00
6664020MC	ISO40 H90 d20	287,00
6664020MCL120	ISO40 H120 d20	352,00
6664020MCL160	ISO40 H160 d20	382,00
6665006MC	ISO50 H100 d6	430,00
6665006MCL120	ISO50 H120 d6	592,00
6665006MCL160	ISO50 H160 d6	659,00
6665008MC	ISO50 H100 d8	430,00

ARTICOLO		€
Mandrini a calettamento a caldo attacco MAS BT/B		
6665008MCL120	ISO50 H120 d8	592,00
6665008MCL160	ISO50 H160 d8	659,00
6665010MC	ISO50 H100 d10	430,00
6665010MCL160	ISO50 H160 d10	659,00
6665012MC	ISO50 H100 d12	430,00
6665012MCL160	ISO50 H160 d12	659,00
6665016MC	ISO50 H100 d16	430,00
6665016MCL160	ISO50 H160 d16	659,00
6665020MC	ISO50 H100 d20	430,00
6665020MCL160	ISO50 H160 d20	659,00
6665025MC	ISO50 H100 d25	430,00
6665025MCL160	ISO50 H160 d25	659,00
6665032MC	ISO50 H100 d32	430,00
6665032MCL160	ISO50 H160 d32	659,00

Mandrini porta pinze ER DIN 6499/B ghiera mini MAS BT AD/B		
6664011ML	ISO40 H100 ER11	168,90
6664011ML130	ISO40 H130 ER11	203,00
6664016ML	ISO40 H100 ER16	168,90
6664016ML130	ISO40 H130 ER16	203,00
6664016ML160	ISO40 H160 ER16	228,00
6664016ML200	ISO40 H200 ER16	299,00
6664020ML	ISO40 H100 ER20	168,90
6664020ML130	ISO40 H130 ER20	203,00
6664020ML160	ISO40 H160 ER20	228,00
6664020ML200	ISO40 H200 ER20	299,00
6664025ML	ISO40 H100 ER25	168,90
6664025ML130	ISO40 H130 ER25	203,00
6664025ML160	ISO40 H160 ER25	228,00
6664025ML200	ISO40 H200 ER25	299,00
6665016ML	ISO50 H100 ER16	245,00
6665016ML130	ISO50 H130 ER16	270,00
6665016ML160	ISO50 H160 ER16	313,00
6665016ML200	ISO50 H200 ER16	351,00
6665020ML	ISO50 H100 ER20	245,00
6665020ML130	ISO50 H130 ER20	270,00
6665020ML160	ISO50 H160 ER20	313,00
6665020ML200	ISO50 H200 ER20	351,00
6665025ML	ISO50 H100 ER25	245,00
6665025ML130	ISO50 H130 ER25	270,00
6665025ML160	ISO50 H160 ER25	313,00
6665025ML200	ISO50 H200 ER25	351,00

Mandrini porta pinze ER DIN 6499/B MAS BT AD/B		
6664016	ISO40 H70 ER16	86,70
6664016L	ISO40 H100 ER16	108,00
6664016L130	ISO40 H130 ER16	158,60
6664020	ISO40 H70 ER20	86,70
6664020L	ISO40 H100 ER20	108,00
6664020L130	ISO40 H130 ER20	158,60
6664025	ISO40 H70 ER25	86,70
6664025L	ISO40 H100 ER25	108,00
6664025L130	ISO40 H130 ER25	158,60
6664025L160	ISO40 H160 ER25	169,20
6664025L200	ISO40 H200 ER25	260,00
6664032	ISO40 H70 ER32	86,70
6664032L	ISO40 H100 ER32	90,80
6664032L130	ISO40 H130 ER32	133,40
6664032L160	ISO40 H160 ER32	169,20
6664032L200	ISO40 H200 ER32	260,00
6664040	ISO40 H70 ER40	95,50
6664040L	ISO40 H100 ER40	129,90

ARTICOLO		€
Mandrini porta pinze ER DIN 6499/B MAS BT AD/B		
6664040L130	ISO40 H130 ER40	181,20
6664040L160	ISO40 H160 ER40	186,40
6664040L200	ISO40 H200 ER40	288,00
6665016	ISO50 H80 ER16	152,70
6665020	ISO50 H80 ER20	152,70
6665025	ISO50 H80 ER25	152,70
6665025L	ISO50 H100 ER25	179,90
6665025L130	ISO50 H130 ER25	215,00
6665025L160	ISO50 H160 ER25	249,00
6665025L200	ISO50 H200 ER25	326,00
6665032	ISO50 H80 ER32	152,70
6665032L	ISO50 H100 ER32	179,90
6665032L130	ISO50 H130 ER32	180,80
6665032L160	ISO50 H160 ER32	249,00
6665032L200	ISO50 H200 ER32	326,00
6665040	ISO50 H80 ER40	162,80
6665040L	ISO50 H100 ER40	206,00
6665040L130	ISO50 H130 ER40	249,00
6665040L160	ISO50 H160 ER40	265,00
6665040L200	ISO50 H200 ER40	351,00



ARTICOLO		€
Mandrini porta frese trascinamento fisso MAS BT AD/B		
6664016TF	ISO40 H45 d16	99,00
6664016TFL	ISO40 H100 d16	131,00
6664016TFL130	ISO40 H130 d16	198,00
6664016TFL160	ISO40 H160 d16	266,00
6664016TFL200	ISO40 H200 d16	319,00
6664022TF	ISO40 H45 d22	99,00
6664022TFL	ISO40 H100 d22	131,00
6664022TFL130	ISO40 H130 d22	198,00
6664022TFL160	ISO40 H160 d22	266,00
6664022TFL200	ISO40 H200 d22	319,00
6664027TF	ISO40 H45 d27	99,00
6664027TFL	ISO40 H100 d27	131,00
6664027TFL130	ISO40 H130 d27	198,00
6664027TFL160	ISO40 H160 d27	266,00
6664027TFL200	ISO40 H200 d27	319,00
6664032TF	ISO40 H50 d32	110,00
6664032TFL	ISO40 H100 d32	143,40
6664032TFL130	ISO40 H130 d32	210,00
6664032TFL160	ISO40 H160 d32	277,00
6664032TFL200	ISO40 H200 d32	333,00
6664040TF	ISO40 H55 d40	134,80
6664040TFL	ISO40 H100 d40	166,80
6664040TFL130	ISO40 H130 d40	232,00
6664040TFL160	ISO40 H160 d40	300,00
6664040TFL200	ISO40 H200 d40	354,00
6665016TF	ISO50 H50 d16	136,40
6665016TFL	ISO50 H100 d16	190,60
6665016TFL130	ISO50 H130 d16	234,00
6665016TFL160	ISO50 H160 d16	270,00
6665016TFL200	ISO50 H200 d16	332,00
6665022TF	ISO50 H50 d22	136,40
6665022TFL	ISO50 H100 d22	190,60
6665022TFL130	ISO50 H130 d22	234,00
6665022TFL160	ISO50 H160 d22	270,00
6665022TFL200	ISO50 H200 d22	332,00
6665027TF	ISO50 H50 d27	136,40
6665027TFL	ISO50 H100 d27	190,60



ARTICOLO		€
Mandrini porta frese trascinamento fisso MAS BT AD/B		
6665027TFL130	ISO50 H130 d27	234,00
6665027TFL160	ISO50 H160 d27	270,00
6665027TFL200	ISO50 H200 d27	332,00
6665032TF	ISO50 H50 d32	140,80
6665032TFL	ISO50 H100 d32	203,00
6665032TFL130	ISO50 H130 d32	242,00
6665032TFL160	ISO50 H160 d32	289,00
6665032TFL200	ISO50 H200 d32	355,00
6665040TF	ISO50 H50 d40	174,30
6665040TFL	ISO50 H100 d40	223,00
6665040TFL130	ISO50 H130 d40	251,00
6665040TFL160	ISO50 H160 d40	319,00
6665040TFL200	ISO50 H200 d40	407,00



Cassette con mandrino porta pinze a forte serraggio		
6664020001FS	Mandrino-Pinze-Chiave ISO40 ER20FS	505,30
6664032001FS	Mandrino-Pinze-Chiave ISO40 ER32FS	552,00
6665032001FS	Mandrino-Pinze-Chiave ISO50 ER32FS	715,00
9994020001FS	Mandrino-Pinze-Chiave ISO40 ER20FS	505,30
9994032001FS	Mandrino-Pinze-Chiave ISO40 ER32FS	552,00
9995032001FS	Mandrino-Pinze-Chiave ISO50 ER32FS	649,00



Cassette con mandrino porta pinze		
6664032001	Mandrino-Pinze-Chiave ISO40 ER32	357,30
6664040001	Mandrino-Pinze-Chiave ISO40 ER40	445,00
6665032001	Mandrino-Pinze-Chiave ISO50 ER32	432,50
6665040001	Mandrino-Pinze-Chiave ISO50 ER40	512,00
9994032001	Mandrino-Pinze-Chiave ISO40 ER32	357,30
9994040001	Mandrino-Pinze-Chiave ISO40 ER40	445,00
9995032001	Mandrino-Pinze-Chiave ISO50 ER32	432,50
9995040001	Mandrino-Pinze-Chiave ISO50 ER40	512,00



Mandrini porta pinze EOP DIN 6388/B MAS BT AD/B		
66640EOP16	ISO40 H70 EOP16	132,90
66640EOP25	ISO40 H70 EOP25	147,60
66640EOP32	ISO40 H80 EOP32	173,50
66650EOP16	ISO50 H70 EOP16	183,90
66650EOP25	ISO50 H85 EOP25	208,00
66650EOP32	ISO50 H90 EOP32	228,00



Mandrini per frese attacco filettato MAS BT AD/B		
66640M06L63	ISO40 M6x63	188,50
66640M06L83	ISO40 M6x83	188,50
66640M08L63	ISO40 M8x63	188,50
66640M08L83	ISO40 M8x83	188,50
66640M08L103	ISO40 M8x103	223,00
66640M10L63	ISO40 M10x63	188,50
66640M10L83	ISO40 M10x83	188,50
66640M10L103	ISO40 M10x103	223,00
66640M10L123	ISO40 M10x123	249,00
66640M12L63	ISO40 M12x63	188,50



ARTICOLO		€
Mandrini per frese attacco filettato MAS BT AD/B		
66640M12L83	ISO40 M12x83	188,50
66640M12L103	ISO40 M12x103	223,00
66640M12L123	ISO40 M12x123	249,00
66640M16L63	ISO40 M16x63	188,50
66640M16L83	ISO40 M16x83	188,50
66640M16L103	ISO40 M16x103	223,00
66640M16L123	ISO40 M16x123	249,00
66640M16L153	ISO40 M16x153	292,00
66650M12L104	ISO50 M12x104	292,00
66650M12L154	ISO50 M12x154	317,00
66650M12L204	ISO50 M12x204	386,00
66650M12L254	ISO50 M12x254	511,00
66650M16L104	ISO50 M16x104	292,00
66650M16L154	ISO50 M16x154	317,00
66650M16L204	ISO50 M16x204	386,00
66650M16L254	ISO50 M16x254	511,00



ARTICOLO		€
Mandrini porta punte integrali chiave esagonale MAS BT AD/B		
66640PC13I	ISO40 H98 d1-13	500,00
66640PC16I	ISO40 H104 d3-16	521,00
66650PC13I	ISO50 H90 d1-13	540,00
66650PC16I	ISO50 H95 d3-16	590,00



ARTICOLO		€
Mandrini porta frese WELDON MAS BT AD/B		
66640W06	ISO40 H50 d6	83,92
66640W06L	ISO40 H100 d6	96,34
66640W06L130	ISO40 H130 d6	154,60
66640W06L160	ISO40 H160 d6	164,70
66640W08	ISO40 H50 d8	75,00
66640W08L	ISO40 H100 d8	88,30
66640W08L130	ISO40 H130 d8	141,30
66640W08L160	ISO40 H160 d8	157,40
66640W10	ISO40 H63 d10	75,00
66640W10L	ISO40 H100 d10	88,30
66640W10L130	ISO40 H130 d10	141,30
66640W10L160	ISO40 H160 d10	157,40
66640W12	ISO40 H63 d12	75,00
66640W12L	ISO40 H100 d12	88,30
66640W12L130	ISO40 H130 d12	141,30
66640W12L160	ISO40 H160 d12	157,40
66640W14	ISO40 H63 d14	75,00
66640W14L	ISO40 H100 d14	88,30
66640W14L130	ISO40 H130 d14	141,30
66640W14L160	ISO40 H160 d14	157,40
66640W16	ISO40 H63 d16	75,00
66640W16L	ISO40 H100 d16	88,30
66640W16L130	ISO40 H130 d16	141,30
66640W16L160	ISO40 H160 d16	157,40
66640W18	ISO40 H63 d18	75,00
66640W18L	ISO40 H100 d18	88,30
66640W18L130	ISO40 H130 d18	141,30
66640W18L160	ISO40 H160 d18	157,40
66640W20	ISO40 H63 d20	75,00
66640W20L	ISO40 H100 d20	88,30
66640W20L130	ISO40 H130 d20	141,30
66640W20L160	ISO40 H160 d20	157,40
66640W25	ISO40 H90 d25	94,58



ARTICOLO		€
Mandrini porta frese WELDON MAS BT AD/B		
66640W25L160	ISO40 H160 d25	171,30
66640W32L	ISO40 H100 d32	98,80
66640W32L160	ISO40 H160 d32	184,30
66640W40	ISO40 H105 d40	122,40
66650W06	ISO50 H63 d6	132,70
66650W06L	ISO50 H100 d6	141,50
66650W06L130	ISO50 H130 d6	223,00
66650W06L160	ISO50 H160 d6	244,00
66650W06L200	ISO50 H200 d6	335,00
66650W08	ISO50 H63 d8	124,30
66650W08L	ISO50 H100 d8	138,30
66650W08L130	ISO50 H130 d8	204,00
66650W08L160	ISO50 H160 d8	215,00
66650W08L200	ISO50 H200 d8	330,00
66650W10	ISO50 H70 d10	124,30
66650W10L	ISO50 H100 d10	138,30
66650W10L130	ISO50 H130 d10	204,00
66650W10L160	ISO50 H160 d10	215,00
66650W10L200	ISO50 H200 d10	330,00
66650W12	ISO50 H80 d12	124,30
66650W12L	ISO50 H100 d12	138,30
66650W12L130	ISO50 H130 d12	204,00
66650W12L160	ISO50 H160 d12	215,00
66650W12L200	ISO50 H200 d12	330,00
66650W14	ISO50 H80 d14	124,30
66650W14L	ISO50 H100 d14	138,30
66650W14L130	ISO50 H130 d14	204,00
66650W14L160	ISO50 H160 d14	215,00
66650W14L200	ISO50 H200 d14	330,00
66650W16	ISO50 H80 d16	124,30
66650W16L	ISO50 H100 d16	138,30
66650W16L130	ISO50 H130 d16	204,00
66650W16L160	ISO50 H160 d16	215,00
66650W16L200	ISO50 H200 d16	330,00
66650W18	ISO50 H80 d18	124,30
66650W18L	ISO50 H100 d18	138,30
66650W18L130	ISO50 H130 d18	204,00
66650W18L160	ISO50 H160 d18	215,00
66650W18L200	ISO50 H200 d18	330,00
66650W20	ISO50 H80 d20	124,30
66650W20L	ISO50 H100 d20	138,30
66650W20L130	ISO50 H130 d20	204,00
66650W20L160	ISO50 H160 d20	215,00
66650W20L200	ISO50 H200 d20	330,00
66650W25L	ISO50 H100 d25	139,40
66650W25L130	ISO50 H130 d25	204,00
66650W25L160	ISO50 H160 d25	231,00
66650W25L200	ISO50 H200 d25	363,00
66650W32	ISO50 H105 d32	145,50
66650W32L130	ISO50 H130 d32	219,00
66650W32L160	ISO50 H160 d32	242,00
66650W40	ISO50 H120 d40	156,50
66650W40L130	ISO50 H130 d40	230,00
66650W40L160	ISO50 H160 d40	257,00
66650W50	ISO50 H125 d50	334,00



ARTICOLO		€
Mandrini porta frese WELDON corto MAS BT AD/B		
66640W16C	ISO40 H35 d16	101,20
66640W20C	ISO40 H35 d20	101,20
66640W25C	ISO40 H35 d25	101,20
66640W32C	ISO40 H70 d32	124,30
66650W16C	ISO50 H44 d16	173,50
66650W20C	ISO50 H44 d20	173,50
66650W25C	ISO50 H44 d25	173,50
66650W32C	ISO50 H44 d32	173,50
66650W40C	ISO50 H44 d40	173,50



ARTICOLO		€
Mandrini porta frese WELDON c/canale lubrificazione MAS BT AD/B		
66640W06CL	ISO40 H50 d6	117,50
66640W08CL	ISO40 H50 d8	112,00
66640W10CL	ISO40 H63 d10	112,00
66640W12CL	ISO40 H63 d12	112,00
66640W14CL	ISO40 H63 d14	112,00
66640W16CL	ISO40 H63 d16	112,00
66640W18CL	ISO40 H63 d18	112,00
66640W20CL	ISO40 H63 d20	112,00
66640W25CL	ISO40 H90 d25	131,00
66640W32CL	ISO40 H100 d32	154,20
66650W06CL	ISO50 H63 d6	207,00
66650W08CL	ISO50 H63 d8	192,70
66650W10CL	ISO50 H63 d10	192,70
66650W12CL	ISO50 H80 d12	192,70
66650W14CL	ISO50 H80 d14	192,70
66650W16CL	ISO50 H80 d16	192,70
66650W18CL	ISO50 H80 d18	192,70
66650W20CL	ISO50 H80 d20	192,70
66650W25CL	ISO50 H100 d25	212,00
66650W32CL	ISO50 H105 d32	224,00

ARTICOLO		€
Mandrini cilindrici porta pinze DIN 6499/B		
7771008ML	ER08 d10x100	38,00
7771208ML130	ER08 d12x130	39,20
7771011ML	ER11 d10x100	28,50
7771211ML130	ER11 d12x130	31,60
7771611ML	ER11 d16x100	31,60
7771611ML130	ER11 d16x130	40,60
7771616M	ER16 d16x80	38,00
7771616ML130	ER16 d16x130	40,60
7771620ML	ER20 d16x100	39,20
7772016M	ER16 d20x100	45,00
7772016ML130	ER16 d20x130	50,00
7772016ML160	ER16 d20x160	55,50
7772025L	ER25 d20x100	50,50
7772032L	ER32 d20x100	50,50
7772525L	ER25 d25x100	50,50
7772532L	ER32 d25x100	50,50
7773232L	ER32 d32x100	53,90
7773240L	ER40 d32x100	56,20
7774040L	ER40 d40x100	58,50



ARTICOLO		€
Maschiatori CM DIN 228/A con doppia compensazione		
8030201	M3-M12 D36 CM2	276,00
8030301	M3-M12 D36 CM3	291,60
8030302	M8-M20 D53 CM3	356,40
8030402	M8-M20 D53 CM4	392,40

ARTICOLO		€
Assortimento con mandrino maschiatore ad inversione		
8030201001INV	completo di 6 bussole GR1FE M3-M12	1.316,00



ARTICOLO		€
Mandrino per maschiare ad inversione		
8030201INV	CM2 M3-M12	830,50

ARTICOLO		€
Maschiatori gambo cilindrico attacco Weldon e Whistle Notch		
8032001WE	M3-M12 D36 WE20	237,00
8032501WE	M3-M12 D36 WE25	237,00
8032502WE	M8-M20 D53 WE25	280,00
8033202WE	M8-M20 D53 WE32	280,00

ARTICOLO		€
Maschiatori CM DIN 228/B con tenone e doppia compensazione		
8040201	M3-M12 D36 CM2	276,00
8040301	M3-M12 D36 CM3	291,60
8040302	M8-M20 D53 CM3	356,40
8040402	M8-M20 D53 CM4	392,40

ARTICOLO		€
Mandrini a calettamento a caldo attacco DIN 69871 AD/B		
9994006MC	ISO40 H80 d6	281,00
9994006MCL120	ISO40 H120 d6	352,00
9994006MCL160	ISO40 H160 d6	382,00
9994008MC	ISO40 H80 d8	281,00
9994008MCL120	ISO40 H120 d8	352,00
9994008MCL160	ISO40 H160 d8	382,00
9994010MC	ISO40 H80 d10	281,00
9994010MCL120	ISO40 H120 d10	352,00
9994010MCL160	ISO40 H160 d10	382,00
9994012MC	ISO40 H80 d12	281,00
9994012MCL120	ISO40 H120 d12	352,00
9994012MCL160	ISO40 H160 d12	382,00
9994016MC	ISO40 H80 d16	281,00
9994016MCL120	ISO40 H120 d16	352,00
9994016MCL160	ISO40 H160 d16	382,00
9994020MC	ISO40 H80 d20	281,00
9994020MCL120	ISO40 H120 d20	352,00
9994020MCL160	ISO40 H160 d20	382,00
9995006MC	ISO50 H80 d6	430,00
9995006MCL120	ISO50 H130 d6	592,00
9995006MCL160	ISO50 H160 d6	659,00
9995008MC	ISO50 H80 d8	430,00
9995008MCL120	ISO50 H130 d8	592,00
9995008MCL160	ISO50 H160 d8	659,00
9995010MC	ISO50 H80 d10	430,00
9995010MCL160	ISO50 H160 d10	659,00
9995012MC	ISO50 H80 d12	430,00
9995012MCL160	ISO50 H160 d12	659,00
9995016MC	ISO50 H80 d16	430,00
9995016MCL160	ISO50 H160 d16	659,00
9995020MC	ISO50 H80 d20	430,00
9995020MCL160	ISO50 H160 d20	659,00
9995025MC	ISO50 H100 d25	430,00
9995025MCL160	ISO50 H160 d25	659,00
9995032MC	ISO50 H100 d32	430,00
9995032MCL160	ISO50 H160 d32	659,00



ARTICOLO		€
Mandrini porta pinze ER DIN 6499/B ghiera mini DIN 69871 AD/B		
9994011ML	ISO40 H100 ER11	168,90
9994011ML130	ISO40 H130 ER11	203,00
9994016ML	ISO40 H100 ER16	168,90
9994016ML130	ISO40 H130 ER16	203,00
9994016ML160	ISO40 H160 ER16	228,00
9994016ML200	ISO40 H200 ER16	299,00
9994020ML	ISO40 H100 ER20	168,90
9994020ML130	ISO40 H130 ER20	203,00



ARTICOLO		€
Mandrini porta pinze ER DIN 6499/B ghiera mini DIN 69871 AD/B		
9994020ML160	ISO40 H160 ER20	228,00
9994020ML200	ISO40 H200 ER20	299,00
9994025ML	ISO40 H100 ER25	168,90
9994025ML130	ISO40 H130 ER25	203,00
9994025ML160	ISO40 H160 ER25	228,00
9994025ML200	ISO40 H200 ER25	299,00
9995016ML	ISO50 H100 ER16	245,00
9995016ML130	ISO50 H130 ER16	270,00
9995016ML160	ISO50 H160 ER16	313,00
9995016ML200	ISO50 H200 ER16	351,00
9995020ML	ISO50 H100 ER20	245,00
9995020ML130	ISO50 H130 ER20	270,00
9995020ML160	ISO50 H160 ER20	313,00
9995020ML200	ISO50 H200 ER20	351,00
9995025ML	ISO50 H100 ER25	245,00
9995025ML130	ISO50 H130 ER25	270,00
9995025ML160	ISO50 H160 ER25	313,00
9995025ML200	ISO50 H200 ER25	351,00



ARTICOLO		€
Mandrini porta pinze ER DIN 6499/B DIN 69871 AD/B		
9994016	ISO40 H70 ER16	86,70
9994016L	ISO40 H100 ER16	108,00
9994016L130	ISO40 H130 ER16	158,60
9994020	ISO40 H70 ER20	86,70
9994020L	ISO40 H100 ER20	108,00
9994020L130	ISO40 H130 ER20	158,60
9994025	ISO40 H70 ER25	86,70
9994025L	ISO40 H100 ER25	90,80
9994025L130	ISO40 H130 ER25	158,60
9994025L160	ISO40 H160 ER25	169,20
9994025L200	ISO40 H200 ER25	260,00
9994032	ISO40 H70 ER32	86,70
9994032L	ISO40 H100 ER32	90,80
9994032L130	ISO40 H130 ER32	133,40
9994032L160	ISO40 H160 ER32	169,20
9994032L200	ISO40 H200 ER32	260,00
9994040	ISO40 H70 ER40	95,50
9994040L	ISO40 H100 ER40	129,90
9994040L130	ISO40 H130 ER40	181,20
9994040L160	ISO40 H160 ER40	186,40
9994040L200	ISO40 H200 ER40	288,00
9995020	ISO50 H80 ER20	152,70
9995020L	ISO50 H100 ER20	179,90
9995025	ISO50 H80 ER25	152,70
9995025L	ISO50 H100 ER25	179,90
9995025L130	ISO50 H130 ER25	215,00
9995025L160	ISO50 H160 ER25	249,00
9995025L200	ISO50 H200 ER25	326,00
9995032	ISO50 H80 ER32	152,70
9995032L	ISO50 H100 ER32	179,90
9995032L130	ISO50 H130 ER32	180,80
9995032L160	ISO50 H160 ER32	249,00
9995032L200	ISO50 H200 ER32	326,00
9995040	ISO50 H80 ER40	162,80
9995040L	ISO50 H100 ER40	206,00
9995040L130	ISO50 H130 ER40	249,00
9995040L160	ISO50 H160 ER40	265,00
9995040L200	ISO50 H200 ER40	351,00



ARTICOLO		€
Mandrini porta frese trascinamento fisso DIN 69871 AD		
9994016TF	ISO40 H45 d16	99,00
9994016TFL	ISO40 H100 d16	131,00
9994016TFL130	ISO40 H130 d16	198,00
9994016TFL160	ISO40 H160 d16	266,00
9994016TFL200	ISO40 H200 d16	319,00
9994022TF	ISO40 H45 d22	99,00
9994022TFL	ISO40 H100 d22	131,00
9994022TFL130	ISO40 H130 d22	198,00
9994022TFL160	ISO40 H160 d22	266,00
9994022TFL200	ISO40 H200 d22	319,00
9994027TF	ISO40 H50 d27	99,00
9994027TFL	ISO40 H100 d27	131,00
9994027TFL130	ISO40 H130 d27	198,00
9994027TFL160	ISO40 H160 d27	266,00
9994027TFL200	ISO40 H200 d27	319,00
9994032TF	ISO40 H55 d32	110,00
9994032TFL	ISO40 H100 d32	143,40
9994032TFL130	ISO40 H130 d32	210,00
9994032TFL160	ISO40 H160 d32	277,00
9994032TFL200	ISO40 H200 d32	333,00
9994040TF	ISO40 H55 d40	134,80
9994040TFL	ISO40 H100 d40	166,80
9994040TFL130	ISO40 H130 d40	232,00
9994040TFL160	ISO40 H160 d40	300,00
9995016TF	ISO50 H45 d16	136,40
9995016TFL	ISO50 H100 d16	190,60
9995016TFL130	ISO50 H130 d16	234,00
9995016TFL160	ISO50 H160 d16	270,00
9995016TFL200	ISO50 H200 d16	332,00
9995022TF	ISO50 H45 d22	136,40
9995022TFL	ISO50 H100 d22	190,60
9995022TFL130	ISO50 H130 d22	234,00
9995022TFL160	ISO50 H160 d22	270,00
9995022TFL200	ISO50 H200 d22	332,00
9995027TF	ISO50 H45 d27	136,40
9995027TFL	ISO50 H100 d27	190,60
9995027TFL130	ISO50 H130 d27	234,00
9995027TFL160	ISO50 H160 d27	270,00
9995027TFL200	ISO50 H200 d27	332,00
9995032TF	ISO50 H55 d32	140,80
9995032TFL	ISO50 H100 d32	203,00
9995032TFL130	ISO50 H130 d32	242,00
9995032TFL160	ISO50 H160 d32	289,00
9995032TFL200	ISO50 H200 d32	355,00
9995040TF	ISO50 H55 d40	174,30
9995040TFL	ISO50 H100 d40	223,00
9995040TFL130	ISO50 H130 d40	251,00
9995040TFL160	ISO50 H160 d40	319,00



ARTICOLO		€
Mandrini porta pinze EOP DIN 6388/B DIN 69871 AD/B		
99940EOP16	ISO40 H70 EOP16	132,90
99940EOP25	ISO40 H70 EOP25	147,60
99940EOP32	ISO40 H80 EOP32	173,50
99950EOP16	ISO50 H70 EOP16	183,90
99950EOP25	ISO50 H70 EOP25	208,00
99950EOP32	ISO50 H80 EOP32	228,00



ARTICOLO		€
Mandrini per frese attacco filettato DIN 69871 A		
99940M08L55	ISO40 M8x55	188,50
99940M08L75	ISO40 M8x75	188,50
99940M08L95	ISO40 M8x95	223,00
99940M08L115	ISO40 M8x115	249,00
99940M10L55	ISO40 M10x55	188,50





ARTICOLO		€
Mandrini per frese attacco filettato DIN 69871 A		
99940M10L75	ISO40 M10x75	188,50
99940M10L95	ISO40 M10x95	223,00
99940M10L115	ISO40 M10x115	249,00
99940M10L145	ISO40 M10x145	292,00
99940M12L55	ISO40 M12x55	188,50
99940M12L75	ISO40 M12x75	188,50
99940M12L95	ISO40 M12x95	223,00
99940M12L115	ISO40 M12x115	249,00
99940M12L145	ISO40 M12x145	292,00
99940M16L55	ISO40 M16x55	188,50
99940M16L75	ISO40 M16x75	188,50
99940M16L95	ISO40 M16x95	223,00
99940M16L115	ISO40 M16x115	249,00
99940M16L145	ISO40 M16x145	292,00
99950M10L85	ISO50 M10x85	292,00
99950M10L135	ISO50 M10x135	317,00
99950M10L185	ISO50 M10x185	386,00
99950M12L85	ISO50 M12x85	292,00
99950M12L135	ISO50 M12x135	317,00
99950M12L185	ISO50 M12x185	386,00
99950M12L235	ISO50 M12x235	511,00
99950M16L85	ISO50 M16x85	292,00
99950M16L135	ISO50 M16x135	317,00
99950M16L185	ISO50 M16x185	386,00
99950M16L235	ISO50 M16x235	511,00



ARTICOLO		€
Mandrini porta frese WELDON DIN 69871 AD/B		
99940W06	ISO40 H50 d6	83,92
99940W06L	ISO40 H100 d6	96,34
99940W06L130	ISO40 H130 d6	154,60
99940W06L160	ISO40 H160 d6	164,70
99940W08	ISO40 H50 d8	75,00
99940W08L	ISO40 H100 d8	88,30
99940W08L130	ISO40 H130 d8	141,30
99940W08L160	ISO40 H160 d8	157,40
99940W10	ISO40 H50 d10	75,00
99940W10L	ISO40 H100 d10	88,30
99940W10L130	ISO40 H130 d10	141,30
99940W10L160	ISO40 H160 d10	157,40
99940W12	ISO40 H50 d12	75,00
99940W12L	ISO40 H100 d12	88,30
99940W12L130	ISO40 H130 d12	141,30
99940W12L160	ISO40 H160 d12	157,40
99940W14	ISO40 H50 d14	75,00
99940W14L	ISO40 H100 d14	88,30
99940W14L130	ISO40 H130 d14	141,30
99940W14L160	ISO40 H160 d14	157,40
99940W16	ISO40 H63 d16	75,00
99940W16L	ISO40 H100 d16	88,30
99940W16L130	ISO40 H130 d16	141,30
99940W16L160	ISO40 H160 d16	157,40
99940W18	ISO40 H63 d18	75,00
99940W18L	ISO40 H100 d18	88,30
99940W18L130	ISO40 H130 d18	141,30
99940W18L160	ISO40 H160 d18	157,40
99940W20	ISO40 H63 d20	75,00
99940W20L	ISO40 H100 d20	88,30
99940W20L130	ISO40 H130 d20	141,30
99940W20L160	ISO40 H160 d20	157,40



ARTICOLO		€
Mandrini porta frese WELDON DIN 69871 AD/B		
99940W25L	ISO40 H100 d25	94,58
99940W25L130	ISO40 H130 d25	160,50
99940W25L160	ISO40 H160 d25	171,30
99940W32L	ISO40 H100 d32	98,80
99940W32L160	ISO40 H160 d32	184,30
99940W40	ISO40 H115 d40	122,40
99950W06	ISO50 H63 d6	132,70
99950W06L	ISO50 H100 d6	141,50
99950W06L130	ISO50 H130 d6	223,00
99950W06L160	ISO50 H160 d6	244,00
99950W06L200	ISO50 H200 d6	335,00
99950W08	ISO50 H63 d8	124,30
99950W08L	ISO50 H100 d8	138,30
99950W08L130	ISO50 H130 d8	204,00
99950W08L160	ISO50 H160 d8	215,00
99950W08L200	ISO50 H200 d8	330,00
99950W10	ISO50 H63 d10	124,30
99950W10L	ISO50 H100 d10	138,30
99950W10L130	ISO50 H130 d10	204,00
99950W10L160	ISO50 H160 d10	215,00
99950W10L200	ISO50 H200 d10	330,00
99950W12	ISO50 H63 d12	124,30
99950W12L	ISO50 H100 d12	138,30
99950W12L130	ISO50 H130 d12	204,00
99950W12L160	ISO50 H160 d12	215,00
99950W12L200	ISO50 H200 d12	330,00
99950W14	ISO50 H63 d14	124,30
99950W14L	ISO50 H100 d14	138,30
99950W14L130	ISO50 H130 d14	204,00
99950W14L160	ISO50 H160 d14	215,00
99950W14L200	ISO50 H200 d14	330,00
99950W16	ISO50 H63 d16	124,30
99950W16L	ISO50 H100 d16	138,30
99950W16L130	ISO50 H130 d16	204,00
99950W16L160	ISO50 H160 d16	215,00
99950W16L200	ISO50 H200 d16	330,00
99950W18	ISO50 H63 d18	124,30
99950W18L	ISO50 H100 d18	138,30
99950W18L130	ISO50 H130 d18	204,00
99950W18L160	ISO50 H160 d18	215,00
99950W18L200	ISO50 H200 d18	330,00
99950W20	ISO50 H63 d20	124,30
99950W20L	ISO50 H100 d20	138,30
99950W20L130	ISO50 H130 d20	204,00
99950W20L160	ISO50 H160 d20	215,00
99950W20L200	ISO50 H200 d20	330,00
99950W25	ISO50 H80 d25	139,40
99950W25L	ISO50 H100 d25	162,80
99950W25L130	ISO50 H130 d25	219,00
99950W25L160	ISO50 H160 d25	231,00
99950W25L200	ISO50 H200 d25	363,00
99950W32L	ISO50 H100 d32	145,50
99950W32L130	ISO50 H130 d32	230,00
99950W32L160	ISO50 H160 d32	242,00
99950W40	ISO50 H120 d40	156,50
99950W40L160	ISO50 H160 d40	257,00
99950W50	ISO50 H130 d50	334,00



ARTICOLO		€
Mandrini porta frese WELDON c/canaline lubrificazione DIN 69871 AD/B		
99940W06CL	ISO40 H50 d6	117,50
99940W08CL	ISO40 H50 d8	112,00
99940W10CL	ISO40 H50 d10	112,00
99940W12CL	ISO40 H50 d12	112,00
99940W14CL	ISO40 H50 d14	112,00
99940W16CL	ISO40 H63 d16	112,00
99940W18CL	ISO40 H63 d18	112,00
99940W20CL	ISO40 H63 d20	112,00
99940W25CL	ISO40 H100 d25	131,00
99940W32CL	ISO40 H100 d32	154,20
99950W06CL	ISO50 H63 d6	207,00
99950W08CL	ISO50 H63 d8	192,70
99950W10CL	ISO50 H63 d10	192,70
99950W12CL	ISO50 H63 d12	192,70
99950W14CL	ISO50 H63 d14	192,70
99950W16CL	ISO50 H63 d16	192,70
99950W18CL	ISO50 H63 d18	192,70
99950W20CL	ISO50 H63 d20	192,70
99950W25CL	ISO50 H80 d25	212,00
99950W32CL	ISO50 H100 d32	224,00



ARTICOLO		€
Mandrini porta frese WELDON tipo corto DIN 69871 AD/B		
99940W16C	ISO40 H35 d16	101,20
99940W20C	ISO40 H35 d20	101,20
99940W25C	ISO40 H35 d25	101,20
99940W32C	ISO40 H70 d32	124,30
99950W16C	ISO50 H35 d16	173,50
99950W20C	ISO50 H35 d20	173,50
99950W25C	ISO50 H35 d25	173,50
99950W32C	ISO50 H35 d32	173,50
99950W40C	ISO50 H35 d40	173,50



ARTICOLO		€
Raccordi per refrigerante		
ADUHSK50A	foro 6,5 mm M16x1	8,50
ADUHSK63A	foro 8 mm M18x1	9,00
ADUHSK100A	foro 12 mm M24x1,5	12,36



ARTICOLO		€
Anelli trascinamento		
ANTRA16	H5 d16	22,80
ANTRA22	H5,6 d22	22,80
ANTRA27	H6,3 d27	25,20
ANTRA32	H7 d32	31,50
ANTRA40	H8 d40	73,20



ARTICOLO		€
Tiranti MAS 403/BT		
BT4030	M16 30° - forato	7,70
BT4030NF	M16 30° - non forato	7,70
BT4045	M16 45° - forato	7,70
BT4045NF	M16 45° - non forato	7,70
BT4090	M16 90° - forato	7,70
BT4090NF	M16 90° - non forato	7,70
BT5030	M24 30° - forato	11,70
BT5030NF	M24 30° - non forato	11,70
BT5045	M24 45° - forato	11,70
BT5045NF	M24 45° - non forato	11,70
BT5090	M24 90° - forato	11,70
BT5090NF	M24 90° - non forato	11,70



ARTICOLO		€
Bussole di riduzione per distributori rotanti		
BUS3216DRA	Ø foro 16 mm Ø bussola 32 mm	75,90
BUS3220DRA	Ø foro 20 mm Ø bussola 32 mm	75,90
BUS3225DRA	Ø foro 25 mm Ø bussola 32 mm	75,90
BUS4016DRA	Ø foro 16 mm Ø bussola 40 mm	75,90
BUS4020DRA	Ø foro 20 mm Ø bussola 40 mm	75,90
BUS4025DRA	Ø foro 25 mm Ø bussola 40 mm	75,90
BUS4032DRA	Ø foro 32 mm Ø bussola 40 mm	75,90



ARTICOLO		€
Tiranti DIN 7388/2		
CAT4045	ISO40 M16 - forato	7,70
CAT4045NF	ISO40 M16 - non forato	7,70
CAT5045	ISO50 M24 - forato	11,70
CAT5045NF	ISO50 M24 - non forato	11,70



ARTICOLO		€
Tiranti DIN 69872 A		
DIN4015	ISO40 M16 - forato	7,70
DIN4015NF	ISO40 M16 - non forato	7,70
DIN5015	ISO50 M24 - forato	11,70
DIN5015NF	ISO50 M24 - non forato	11,70



ARTICOLO		€
Tiranti prolungati per mandrini combinati P/F		
DIN4015M10	ISO40 CM2 M10	76,70
DIN4015M12	ISO40 CM3 M12	76,70
DIN4015M16	ISO40 CM4 M16	76,70
TC4015M10	ISO40 CM2 M10	71,34
TC4015M12	ISO40 CM3 M12	71,34
TC4015M16	ISO40 CM4 M16	71,34
CAT4045M10	ISO40 CM2 M10	76,70
CAT4045M12	ISO40 CM3 M12	76,70
CAT4045M16	ISO40 CM4 M16	76,70
BT4030M10	ISO40 CM2 M10 30°	76,70
BT4030M12	ISO40 CM3 M12 30°	76,70
BT4030M16	ISO40 CM4 M16 30°	76,70
BT4045M10	ISO40 CM2 M10 45°	76,70
BT4045M12	ISO40 CM3 M12 45°	76,70
BT4045M16	ISO40 CM4 M16 45°	76,70
BT4090M10	ISO40 CM2 M10 90°	76,70
BT4090M12	ISO40 CM3 M12 90°	76,70
BT4090M16	ISO40 CM4 M16 90°	76,70



ARTICOLO		€
Pinze EOP16 DIN 6388/B		
EOP16020	D2	14,30
EOP16025	D2,5	14,30
EOP16030	D3	10,30
EOP16035	D3,5	11,70
EOP16040	D4	10,30
EOP16045	D4,5	11,70
EOP16050	D5	10,30
EOP16055	D5,5	11,70
EOP16060	D6	10,30





ARTICOLO		€
Pinze EOP16 DIN 6388/B		
EOP16065	D6,5	11,70
EOP16070	D7	10,30
EOP16075	D7,5	11,70
EOP16080	D8	10,30
EOP16085	D8,5	11,70
EOP16090	D9	10,30
EOP16095	D9,5	11,70
EOP16100	D10	10,30
EOP16105	D10,5	11,70
EOP16110	D11	10,30
EOP16115	D11,5	11,70
EOP16120	D12	10,30
EOP16125	D12,5	11,70
EOP16130	D13	10,30
EOP16135	D13,5	11,70
EOP16140	D14	10,30
EOP16145	D14,5	11,70
EOP16150	D15	10,30
EOP16155	D15,5	11,70
EOP16160	D16	10,30



Ghiere con sfere per pinze DIN 6388		
EOP16130G	EOP16	42,40
EOP25130G	EOP25	70,50
EOP32130G	EOP32	92,48



Pinze EOP25 DIN 6388/B		
EOP25020	D2	15,00
EOP25025	D2,5	15,00
EOP25030	D3	11,60
EOP25035	D3,5	12,90
EOP25040	D4	11,60
EOP25045	D4,5	12,90
EOP25050	D5	11,60
EOP25055	D5,5	12,90
EOP25060	D6	11,60
EOP25065	D6,5	12,90
EOP25070	D7	11,60
EOP25075	D7,5	12,90
EOP25080	D8	11,60
EOP25085	D8,5	12,90
EOP25090	D9	11,60
EOP25095	D9,5	12,90
EOP25100	D10	11,60
EOP25105	D10,5	12,90
EOP25110	D11	11,60
EOP25115	D11,5	12,90
EOP25120	D12	11,60
EOP25125	D12,5	12,90
EOP25130	D13	11,60
EOP25135	D13,5	12,90
EOP25140	D14	11,60
EOP25145	D14,5	12,90
EOP25150	D15	11,60



ARTICOLO		€
Pinze EOP25 DIN 6388/B		
EOP25155	D15,5	12,90
EOP25160	D16	11,60
EOP25165	D16,5	12,90
EOP25170	D17	11,60
EOP25175	D17,5	12,90
EOP25180	D18	11,60
EOP25185	D18,5	12,90
EOP25190	D19	11,60
EOP25195	D19,5	12,90
EOP25200	D20	11,60
EOP25205	D20,5	12,90
EOP25210	D21	11,60
EOP25215	D21,5	12,90
EOP25220	D22	11,60
EOP25225	D22,5	12,90
EOP25230	D23	11,60
EOP25235	D23,5	12,90
EOP25240	D24	11,60
EOP25245	D24,5	12,90
EOP25250	D25	11,60



Pinze EOP32 DIN 6388/B		
EOP32030	D3	15,50
EOP32035	D3,5	18,20
EOP32040	D4	15,50
EOP32045	D4,5	18,20
EOP32050	D5	15,50
EOP32055	D5,5	18,20
EOP32060	D6	15,50
EOP32065	D6,5	18,20
EOP32070	D7	15,50
EOP32075	D7,5	18,20
EOP32080	D8	15,50
EOP32085	D8,5	18,20
EOP32090	D9	15,50
EOP32095	D9,5	18,20
EOP32100	D10	15,50
EOP32105	D10,5	18,20
EOP32110	D11	15,50
EOP32115	D11,5	18,20
EOP32120	D12	15,50
EOP32125	D12,5	18,20
EOP32130	D13	15,50
EOP32135	D13,5	18,20
EOP32140	D14	15,50
EOP32145	D14,5	18,20
EOP32150	D15	15,50
EOP32155	D15,5	18,20
EOP32160	D16	15,50
EOP32165	D16,5	18,20
EOP32170	D17	15,50
EOP32175	D17,5	18,20
EOP32180	D18	15,50
EOP32185	D18,5	18,20



ARTICOLO		€
Pinze EOP32 DIN 6388/B		
EOP32190	D19	15,50
EOP32195	D19,5	18,20
EOP32200	D20	15,50
EOP32205	D20,5	18,20
EOP32210	D21	15,50
EOP32215	D21,5	18,20
EOP32220	D22	15,50
EOP32225	D22,5	18,20
EOP32230	D23	15,50
EOP32235	D23,5	18,20
EOP32240	D24	15,50
EOP32245	D24,5	18,20
EOP32250	D25	15,50
EOP32255	D25,5	18,20
EOP32260	D26	15,50
EOP32265	D26,5	18,20
EOP32270	D27	15,50
EOP32275	D27,5	18,20
EOP32280	D28	15,50
EOP32285	D28,5	18,20
EOP32290	D29	15,50
EOP32295	D29,5	18,20
EOP32300	D30	15,50
EOP32305	D30,5	18,20
EOP32310	D31	15,50
EOP32315	D31,5	18,20
EOP32320	D32	15,50


Ghiere mini

EPR08100M	ER08 A12	7,90
EPR11100M	ER11 A16	6,40
EPR11100MSX	ER11 A16 sinistra	22,40
EPR16100M	ER16 A22	7,70
EPR16100MSX	ER16 A22 sinistra	22,40
EPR20100M	ER20 A28	7,70
EPR20100MSX	ER20 A28 sinistra	22,40
EPR25100M	ER25 A35	7,90
EPR25100MSX	ER25 A35 sinistra	25,80


Pinze ER08 DIN 6499/B

EPR08010	D1	14,60
EPR08015	D1,5	14,60
EPR08020	D2	14,60
EPR08025	D2,5	14,60
EPR08030	D3	14,60
EPR08035	D3,5	14,60
EPR08040	D4	14,60
EPR08045	D4,5	14,60
EPR08050	D5	14,60


Chiavi per ghiera

EPR08160M	ER08	7,20
EPR11160M	ER11	9,60
EPR16160M	ER16	9,60
EPR20160M	ER20	9,60
EPR25160M	ER25	10,20
EPR16180CH	ER16	9,60
EPR20180CH	ER20	9,60
EPR25180CH	ER25	9,60
EPR32180CH	ER32	10,30
EPR40180CH	ER40	11,60
EOP16180CHS	EOP16	6,60
EOP25180CHS	EOP25	9,60
EOP32180CHS	EOP32	9,60



ARTICOLO		€
Pinze ER11 DIN 6499/B		
EPR11010	D1	10,20
EPR11015	D1,5	10,20
EPR11020	D2	10,20
EPR11025	D2,5	10,20
EPR11030	D3	7,90
EPR11035	D3,5	7,90
EPR11040	D4	7,90
EPR11045	D4,5	7,90
EPR11050	D5	7,90
EPR11055	D5,5	7,90
EPR11060	D6	7,90
EPR11065	D6,5	7,90
EPR11070	D7	7,90


Pinze ER11 DIN 6499/B ultra precise

EPR11030UP	D3	20,10
EPR11035UP	D3,5	20,10
EPR11040UP	D4	20,10
EPR11045UP	D4,5	20,10
EPR11050UP	D5	20,10
EPR11055UP	D5,5	20,10
EPR11060UP	D6	20,10
EPR11065UP	D6,5	20,10
EPR11070UP	D7	20,10


Ghiere per pinze DIN 6499 forma esagonale

EPR11120ES	ER11	6,40
EPR16120ES	ER16	7,70
EPR20120ES	ER20	7,70


Pinze ER16 DIN 6499/B

EPR16010	D1	9,10
EPR16015	D1,5	9,10
EPR16020	D2	9,10
EPR16025	D2,5	9,10
EPR16030	D3	6,10
EPR16040	D4	6,10
EPR16050	D5	6,10
EPR16060	D6	6,10
EPR16070	D7	6,10
EPR16080	D8	6,10
EPR16090	D9	6,10
EPR16100	D10	6,10


Pinze ER16 DIN 6499/B tenuta stagna

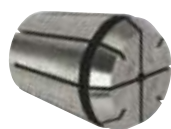
EPR16030TS	D3	27,40
EPR16040TS	D4	27,40
EPR16050TS	D5	27,40
EPR16060TS	D6	27,40
EPR16070TS	D7	27,40
EPR16080TS	D8	27,40
EPR16090TS	D9	27,40
EPR16100TS	D10	27,40


Pinze ER16 DIN 6499/B ultra precise

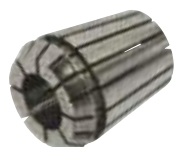
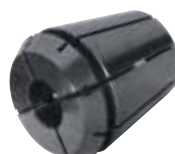
EPR16030UP	D3	18,00
EPR16040UP	D4	18,00
EPR16050UP	D5	18,00
EPR16060UP	D6	18,00
EPR16070UP	D7	18,00
EPR16080UP	D8	18,00
EPR16090UP	D9	18,00
EPR16100UP	D10	18,00



ARTICOLO		€
Pinze ER porta maschi per maschiatura rigida		
EPR16035MR	ER16 A3,5	47,00
EPR16040MR	ER16 A4	47,00
EPR16045MR	ER16 A4,5	47,00
EPR16050MR	ER16 A5	47,00
EPR16055MR	ER16 A5,5	47,00
EPR16060MR	ER16 A6	47,00
EPR16070MR	ER16 A7	47,00
EPR20035MR	ER20 A3,5	47,00
EPR20040MR	ER20 A4	47,00
EPR20045MR	ER20 A4,5	47,00
EPR20050MR	ER20 A5	47,00
EPR20055MR	ER20 A5,5	47,00
EPR20060MR	ER20 A6	47,00
EPR20070MR	ER20 A7	47,00
EPR20080MR	ER20 A8	47,00
EPR20090MR	ER20 A9	47,00
EPR20100MR	ER20 A10	47,00
EPR25035MR	ER25 A3,5	49,10
EPR25040MR	ER25 A4	49,10
EPR25045MR	ER25 A4,5	49,10
EPR25050MR	ER25 A5	49,10
EPR25055MR	ER25 A5,5	49,10
EPR25060MR	ER25 A6	49,10
EPR25070MR	ER25 A7	49,10
EPR25080MR	ER25 A8	49,10
EPR25090MR	ER25 A9	49,10
EPR25100MR	ER25 A10	49,10
EPR25110MR	ER25 A11	49,10
EPR25120MR	ER25 A12	49,10
EPR32035MR	ER32 A3,5	49,10
EPR32040MR	ER32 A4	49,10
EPR32045MR	ER32 A4,5	49,10
EPR32050MR	ER32 A5	49,10
EPR32055MR	ER32 A5,5	49,10
EPR32060MR	ER32 A6	49,10
EPR32070MR	ER32 A7	49,10
EPR32080MR	ER32 A8	49,10
EPR32090MR	ER32 A9	49,10
EPR32100MR	ER32 A10	49,10
EPR32110MR	ER32 A11	49,10
EPR32120MR	ER32 A12	49,10
EPR32140MR	ER32 A14	49,10
EPR32160MR	ER32 A16	49,10
EPR40060MR	ER40 A6	53,30
EPR40070MR	ER40 A7	53,30
EPR40080MR	ER40 A8	53,30
EPR40090MR	ER40 A9	53,30
EPR40100MR	ER40 A10	53,30
EPR40110MR	ER40 A11	53,30
EPR40120MR	ER40 A12	53,30
EPR40140MR	ER40 A14	53,30
EPR40160MR	ER40 A16	53,30
EPR40180MR	ER40 A18	53,30
EPR40200MR	ER40 A20	53,30



ARTICOLO		€
Ghiere per pinze DIN 6499		
EPR16120G	Tipo G ER16	6,50
EPR20120G	Tipo G ER20	6,70
EPR25120G	Tipo G ER25	7,30
EPR32120G	Tipo G ER32	8,50
EPR32130G	Tipo G ER32 B26	47,20
EPR40120G	Tipo G ER40	9,80
EPR40130G	Tipo G ER40 B29	55,20
EPR16120GC	Tipo GC ER16	7,00
EPR25120GC	Tipo GC ER25	7,80
EPR32120GC	Tipo GC ER32	8,90
EPR40120GC	Tipo GC ER40	10,20
Pinze ER20 DIN 6499/B		
EPR20010	D1	9,10
EPR20015	D1,5	9,10
EPR20020	D2	9,10
EPR20025	D2,5	9,10
EPR20030	D3	6,90
EPR20040	D4	6,90
EPR20050	D5	6,90
EPR20060	D6	6,90
EPR20070	D7	6,90
EPR20080	D8	6,90
EPR20090	D9	6,90
EPR20100	D10	6,90
EPR20110	D11	6,90
EPR20120	D12	6,90
EPR20130	D13	6,90
Pinze ER20 DIN 6499/B tenuta stagna		
EPR20030TS	D3	27,40
EPR20040TS	D4	27,40
EPR20050TS	D5	27,40
EPR20060TS	D6	27,40
EPR20070TS	D7	27,40
EPR20080TS	D8	27,40
EPR20090TS	D9	27,40
EPR20100TS	D10	27,40
EPR20110TS	D11	27,40
EPR20120TS	D12	27,40
EPR20130TS	D13	27,40
Pinze ER20 DIN 6499/B ultra precise		
EPR20030UP	D3	21,10
EPR20040UP	D4	21,10
EPR20050UP	D5	21,10
EPR20060UP	D6	21,10
EPR20070UP	D7	21,10
EPR20080UP	D8	21,10
EPR20090UP	D9	21,10
EPR20100UP	D10	21,10
EPR20110UP	D11	21,10
EPR20120UP	D12	21,10
EPR20130UP	D13	21,10
Pinze cilindriche per mandrini forte serraggio		
EPR2004FS	D20 d4	12,00
EPR2006FS	D20 d6	12,00
EPR2008FS	D20 d8	12,00
EPR2010FS	D20 d10	12,00
EPR2012FS	D20 d12	12,00
EPR2014FS	D20 d14	12,00



ARTICOLO		€
Pinze cilindriche per mandrini forte serraggio		
EPR2016FS	D20 d16	12,00
EPR3206FS	D32 d6	12,80
EPR3208FS	D32 d8	12,80
EPR3210FS	D32 d10	12,80
EPR3212FS	D32 d12	12,80
EPR3214FS	D32 d14	12,80
EPR3216FS	D32 d16	12,80
EPR3218FS	D32 d18	12,80
EPR3220FS	D32 d20	12,80
EPR3225FS	D32 d25	12,80



Pinze ER25 DIN 6499/B		
EPR25010	D1	9,60
EPR25015	D1,5	9,60
EPR25020	D2	9,60
EPR25025	D2,5	9,60
EPR25030	D3	7,20
EPR25040	D4	7,20
EPR25050	D5	7,20
EPR25060	D6	7,20
EPR25070	D7	7,20
EPR25080	D8	7,20
EPR25090	D9	7,20
EPR25100	D10	7,20
EPR25110	D11	7,20
EPR25120	D12	7,20
EPR25130	D13	7,20
EPR25140	D14	7,20
EPR25150	D15	7,20
EPR25160	D16	7,20



Pinze ER25 DIN 6499/B tenuta stagna		
EPR25030TS	D3	27,40
EPR25040TS	D4	27,40
EPR25050TS	D5	27,40
EPR25060TS	D6	27,40
EPR25070TS	D7	27,40
EPR25080TS	D8	27,40
EPR25090TS	D9	27,40
EPR25100TS	D10	27,40
EPR25110TS	D11	27,40
EPR25120TS	D12	27,40
EPR25130TS	D13	27,40
EPR25140TS	D14	27,40
EPR25150TS	D15	27,40
EPR25160TS	D16	27,40



Pinze ER25 DIN 6499/B ultra precise		
EPR25030UP	D3	22,20
EPR25040UP	D4	22,20
EPR25050UP	D5	22,20
EPR25060UP	D6	22,20
EPR25070UP	D7	22,20
EPR25080UP	D8	22,20
EPR25090UP	D9	22,20
EPR25100UP	D10	22,20
EPR25110UP	D11	22,20



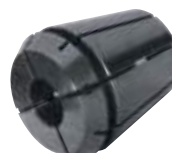
ARTICOLO		€
Pinze ER25 DIN 6499/B ultra precise		
EPR25120UP	D12	22,20
EPR25130UP	D13	22,20
EPR25140UP	D14	22,20
EPR25150UP	D15	22,20
EPR25160UP	D16	22,20



Pinze ER32 DIN 6499/B		
EPR32020	D2	10,20
EPR32025	D2,5	10,20
EPR32030	D3	9,20
EPR32040	D4	9,20
EPR32050	D5	9,20
EPR32060	D6	9,20
EPR32070	D7	9,20
EPR32080	D8	9,20
EPR32090	D9	9,20
EPR32100	D10	9,20
EPR32110	D11	9,20
EPR32120	D12	9,20
EPR32130	D13	9,20
EPR32140	D14	9,20
EPR32150	D15	9,20
EPR32160	D16	9,20
EPR32170	D17	9,20
EPR32180	D18	9,20
EPR32190	D19	9,20
EPR32200	D20	9,20



Pinze ER32 DIN 6499/B tenuta stagna		
EPR32030TS	D3	26,40
EPR32040TS	D4	26,40
EPR32050TS	D5	26,40
EPR32060TS	D6	26,40
EPR32070TS	D7	26,40
EPR32080TS	D8	26,40
EPR32090TS	D9	26,40
EPR32100TS	D10	26,40
EPR32110TS	D11	26,40
EPR32120TS	D12	26,40
EPR32130TS	D13	26,40
EPR32140TS	D14	26,40
EPR32150TS	D15	26,40
EPR32160TS	D16	26,40
EPR32170TS	D17	26,40
EPR32180TS	D18	26,40
EPR32190TS	D19	26,40
EPR32200TS	D20	26,40



Pinze ER32 DIN 6499/B ultra precise		
EPR32030UP	D3	21,10
EPR32040UP	D4	21,10
EPR32050UP	D5	21,10
EPR32060UP	D6	21,10
EPR32070UP	D7	21,10
EPR32080UP	D8	21,10
EPR32090UP	D9	21,10
EPR32100UP	D10	21,10



ARTICOLO	€
Pinze ER32 DIN 6499/B ultra precise	
EPR32110UP D11	21,10
EPR32120UP D12	21,10
EPR32130UP D13	21,10
EPR32140UP D14	21,10
EPR32150UP D15	21,10
EPR32160UP D16	21,10
EPR32170UP D17	21,10
EPR32180UP D18	21,10
EPR32190UP D19	21,10
EPR32200UP D20	21,10



ARTICOLO	€
Pinze ER40 DIN 6499/B	
EPR40030 D3	10,80
EPR40040 D4	10,80
EPR40050 D5	10,80
EPR40060 D6	10,80
EPR40070 D7	10,80
EPR40080 D8	10,80
EPR40090 D9	10,80
EPR40100 D10	10,80
EPR40110 D11	10,80
EPR40120 D12	10,80
EPR40130 D13	10,80
EPR40140 D14	10,80
EPR40150 D15	10,80
EPR40160 D16	10,80
EPR40170 D17	10,80
EPR40180 D18	10,80
EPR40190 D19	10,80
EPR40200 D20	10,80
EPR40210 D21	10,80
EPR40220 D22	10,80
EPR40230 D23	10,80
EPR40240 D24	10,80
EPR40250 D25	10,80
EPR40260 D26	10,80
EPR40270 D27	10,80
EPR40280 D28	10,80
EPR40290 D29	10,80
EPR40300 D30	10,80



ARTICOLO	€
Pinze ER40 DIN 6499/B tenuta stagna	
EPR40040TS D4	36,90
EPR40050TS D5	36,90
EPR40060TS D6	36,90
EPR40070TS D7	36,90
EPR40080TS D8	36,90
EPR40090TS D9	36,90
EPR40100TS D10	36,90
EPR40110TS D11	36,90
EPR40120TS D12	36,90
EPR40130TS D13	36,90
EPR40140TS D14	36,90
EPR40150TS D15	36,90
EPR40160TS D16	36,90
EPR40170TS D17	36,90



ARTICOLO	€
Pinze ER40 DIN 6499/B tenuta stagna	
EPR40180TS D18	36,90
EPR40190TS D19	36,90
EPR40200TS D20	36,90
EPR40210TS D21	36,90
EPR40220TS D22	36,90
EPR40230TS D23	36,90
EPR40240TS D24	36,90
EPR40250TS D25	36,90
EPR40260TS D26	36,90



ARTICOLO	€
Pinze ER40 DIN 6499/B ultra precise	
EPR40030UP D3	25,30
EPR40040UP D4	25,30
EPR40050UP D5	25,30
EPR40060UP D6	25,30
EPR40070UP D7	25,30
EPR40080UP D8	25,30
EPR40090UP D9	25,30
EPR40100UP D10	25,30
EPR40110UP D11	25,30
EPR40120UP D12	25,30
EPR40130UP D13	25,30
EPR40140UP D14	25,30
EPR40150UP D15	25,30
EPR40160UP D16	25,30
EPR40170UP D17	25,30
EPR40180UP D18	25,30
EPR40190UP D19	25,30
EPR40200UP D20	25,30
EPR40210UP D21	25,30
EPR40220UP D22	25,30
EPR40230UP D23	25,30
EPR40240UP D24	25,30
EPR40250UP D25	25,30



Dischetto per utensili

ESM1000316 da \varnothing 3 a 16 mm Rich. Offerta

Unità mobile di calettamento ad induzione



ESM100065 campo serraggio HM \varnothing 3-16 mm Rich. Offerta

Supporti porta mandrino per unità mobile di calettamento

ESM1000HSK32	HSK32	Rich. Offerta
ESM1000HSK40	HSK40	Rich. Offerta
ESM1000HSK50	HSK50	Rich. Offerta
ESM1000HSK63	HSK63	Rich. Offerta
ESM1000HSK80	HSK80	Rich. Offerta
ESM1000HSK100	HSK100	Rich. Offerta
ESM1000SK30	SK30	Rich. Offerta
ESM1000SK40	SK40	Rich. Offerta
ESM1000SK50	SK50	Rich. Offerta

ARTICOLO	€
----------	---

Centratori tridimensionali


FH3DUNIV	precisione 0,01 mm	fuori prod.
-----------------	--------------------	--------------------

FH3DPUNTA4C	puntalino ricambio tipo corto 25 mm	53,70
--------------------	-------------------------------------	--------------

FH3DPUNTA8L	puntalino ricambio tipo lungo 65 mm	92,50
--------------------	-------------------------------------	--------------



FH3DUNIV-E	3D taster precisione 0,01 mm	688,00
-------------------	------------------------------	---------------

FH3DPUNTA4C-E	puntalino ricambio per 3D Ø 3 mm tipo corto (27 mm)	62,16
----------------------	---	--------------

FH3DPUNTA8L-E	puntalino ricambio per 3D Ø 6 mm tipo lungo (62 mm)	104,30
----------------------	---	---------------

FH3DCUF-E	guarnizione per 3D	49,20
------------------	--------------------	--------------

Ghiere tenuta viti


GHIERASXCM1	CM1	8,74
--------------------	-----	-------------

GHIERASXCM2	CM2	8,74
--------------------	-----	-------------

GHIERASXCM3	CM3	12,94
--------------------	-----	--------------

GHIERASXCM4	CM4	13,14
--------------------	-----	--------------

GHIERASXCM5	CM5	20,98
--------------------	-----	--------------

Bussole porta maschi con frizione tipo Export


GR1FE0649	M5-M6	56,20
------------------	-------	--------------

GR1FE0755	M10	56,20
------------------	-----	--------------

GR1FE0862	M8	56,20
------------------	----	--------------

GR1FE0907	M12	56,20
------------------	-----	--------------

GR1FE1008	M10	56,20
------------------	-----	--------------

GR1FE1109	M14	56,20
------------------	-----	--------------

GR1FE3527	M3	56,20
------------------	----	--------------

GR1FE4534	M4	56,20
------------------	----	--------------

GR1FE5543	M5	56,20
------------------	----	--------------

GR2FE0649	M5-M6	74,94
------------------	-------	--------------

GR2FE0755	M10	74,94
------------------	-----	--------------

GR2FE0862	M8	74,94
------------------	----	--------------

GR2FE0907	M12	74,94
------------------	-----	--------------

GR2FE1008	M10	74,94
------------------	-----	--------------

GR2FE1109	M14	74,94
------------------	-----	--------------

GR2FE1209	M16	74,94
------------------	-----	--------------

GR2FE1411	M18	74,94
------------------	-----	--------------

GR2FE1612	M20	74,94
------------------	-----	--------------

GR2FE18145	M22-M24	74,94
-------------------	---------	--------------

Bussole porta maschi tipo export senza frizione


GR1NE2821	M2-M2,5	24,60
------------------	---------	--------------

GR1NE3527	M3	24,60
------------------	----	--------------

GR1NE0403	M3,5	24,60
------------------	------	--------------

GR1NE4534	M4	24,60
------------------	----	--------------

GR1NE0540	M5	24,60
------------------	----	--------------

GR1NE0649	M5-M6	24,60
------------------	-------	--------------

GR1NE0755	M10	24,60
------------------	-----	--------------

GR1NE0862	M8	24,60
------------------	----	--------------

GR1NE0907	M12	24,60
------------------	-----	--------------

GR1NE1008	M10	24,60
------------------	-----	--------------

GR1NE1109	M14	24,60
------------------	-----	--------------

GR2NE0649	M5-M6	34,76
------------------	-------	--------------

GR2NE0755	M10	34,76
------------------	-----	--------------

GR2NE0862	M8	34,76
------------------	----	--------------

GR2NE0907	M12	34,76
------------------	-----	--------------

GR2NE1008	M10	34,76
------------------	-----	--------------

GR2NE1109	M14	34,76
------------------	-----	--------------

GR2NE1209	M16	34,76
------------------	-----	--------------

GR2NE1411	M18	34,76
------------------	-----	--------------

GR2NE1612	M20	34,76
------------------	-----	--------------

GR2NE18145	M22	34,76
-------------------	-----	--------------

ARTICOLO	€
----------	---

Grani fissaggio frese WELDON


GRANIM0610	M6x10	2,10
-------------------	-------	-------------

GRANIM0810	M8x10	2,62
-------------------	-------	-------------

GRANIM1012	M10x12	2,62
-------------------	--------	-------------

GRANIM1216	M12x16	2,62
-------------------	--------	-------------

GRANIM1416	M14x16	5,24
-------------------	--------	-------------

GRANIM1616	M16x16	5,60
-------------------	--------	-------------

GRANIM1820	M18x2x20	7,88
-------------------	----------	-------------

GRANIM2020	M20x2x20	8,60
-------------------	----------	-------------

Smontaconi a ruota libera


HSK40SMRL	HSK 40	275,00
------------------	--------	---------------

HSK50SMRL	HSK 50	260,00
------------------	--------	---------------

HSK63SMRL	HSK 63	260,00
------------------	--------	---------------

HSK100SMRL	HSK 100	535,00
-------------------	---------	---------------

Smontaconi orientabili


ISO30SM	ISO30	212,00
----------------	-------	---------------

ISO40SM	ISO40	233,50
----------------	-------	---------------

ISO50SM	ISO50	270,60
----------------	-------	---------------

Assortimenti mandrini porta pinze DIN 6499/B Cono Morse DIN 228/A


MS2ER2510	CM2 ER25	145,70
------------------	----------	---------------

MS3ER3212	CM3 ER32	250,20
------------------	----------	---------------

MS4ER3212	CM4 ER32	265,20
------------------	----------	---------------

Tiranti OTT


OTT40DIN	ISO40 M16 H53	8,50
-----------------	---------------	-------------

OTT40BT	ISO40 M16 H56	8,50
----------------	---------------	-------------

OTT50	ISO50 M24 H65	13,00
--------------	---------------	--------------

Mandrini poligonali con stelo tenero PSC63 ISO 26623-1


PSC63110STL85	D110 H85	395,00
----------------------	----------	---------------

PSC63130STL95	D130 H95	459,00
----------------------	----------	---------------

PSC6363STL180	D63 H180	348,00
----------------------	----------	---------------

PSC63120STL180	D120 H180	578,00
-----------------------	-----------	---------------

PSC6375STL195	D75 H195	348,00
----------------------	----------	---------------

Mandrini poligonali porta pinze ER PSC63 ISO 26623-1


PSC6316L60	ER16 H60	338,00
-------------------	----------	---------------

PSC6325L60	ER25 H60	338,00
-------------------	----------	---------------

PSC6332L60	ER32 H60	338,00
-------------------	----------	---------------

PSC6340L70	ER40 H70	366,00
-------------------	----------	---------------

PSC6316L100	ER16 H100	386,10
--------------------	-----------	---------------

PSC6325L100	ER25 H100	386,10
--------------------	-----------	---------------


PSC6332L100	ER32 H100	386,10
--------------------	-----------	---------------

PSC6340L100	ER40 H100	401,00
--------------------	-----------	---------------

PSC6316L160	ER16 H160	510,00
--------------------	-----------	---------------

PSC6325L160	ER25 H160	510,00
--------------------	-----------	---------------

PSC6332L160	ER32 H160	510,00
--------------------	-----------	---------------

ARTICOLO	€
Mandrini poligonali porta pinze ER PSC63 ghiera mini ISO 26623-1	
 PSC6316ML60 ER16 H60	351,00
PSC6320ML60 ER20 H60	356,40
PSC6316ML100 ER16 H100	424,00
PSC6320ML100 ER20 H100	420,00

Mandrini poligonali porta frese trascinamento fisso PSC63 ISO 26623-1	
 PSC6316TFL35 d27 H35	359,00
PSC6316TFL63 d16 H63	366,00
PSC6322TFL35 d22 H35	359,00
PSC6327TFL40 d27 H40	359,00
PSC6332TFL40 d32 H40	376,00
PSC6340TFL45 d40 H45	415,00


Mandrini poligonali porta frese trascinamento frontale e linguetta PSC63 ISO 26623-1	
 PSC6316UL90 d16 H90	fuori prod.
PSC6322UL90 d22 H90	fuori prod.
PSC6327UL90 d27 H90	fuori prod.
PSC6332UL90 d32 H90	fuori prod.
PSC6340UL90 d40 H90	fuori prod.

Mandrini poligonali a forte serraggio PSC63 ISO 26623-1	
 PSC6320FSL80 ISO 26623-1 d20 H80	883,00
PSC6332FSL100 ISO 26623-1 d32 H100	909,00

Mandrini poligonali porta baren assiali PSC63 ISO 26623-1	
 PSC63BR16L80 d16 H80	404,00
PSC63BR20L80 d20 H80	404,00
PSC63BR25L85 d25 H85	404,00
PSC63BR32L95 d32 H95	404,00
PSC63BR40L105 d40 H105	416,00


Mandrini poligonali riduzioni Cono Morse per punte PSC63 ISO 26623-1	
 PSC63CM2PL110 H110	386,00
PSC63CM3PL130 H130	386,00
PSC63CM4PL155 H155	424,00

Mandrini poligonali porta frese con attacco filettato PSC63 ISO 26623-1	
 PSC63M08L70 M8 H70	463,00
PSC63M10L90 M10 H90	463,00
PSC63M12L100 M12 H100	463,00
PSC63M16L100 M16 H100	463,00

Mandrini poligonali porta maschi a cambio rapido PSC63 ISO 26623-1	
 PSC63M312L73 H73 GR.1	1.202,00
PSC63M820L97 H97 GR.2	1.395,00


Mandrini poligonali porta punte integrali PSC63 ISO 26623-1	
 PSC63PC13IL112 Ø13 H112	1.388,00
PSC63PC16IL112 Ø16 H112	1.408,00


Mandrini poligonali porta frese Weldon PSC63 ISO 26623-1	
 PSC63W06L55 d6 H55	357,00
PSC63W08L55 d8 H55	347,00
PSC63W10L60 d10 H60	347,00
PSC63W12L60 d12 H60	347,00
PSC63W14L65 d14 H60	347,00


ARTICOLO	€
Mandrini poligonali porta frese Weldon PSC63 ISO 26623-1	
 PSC63W16L65 d16 H65	347,00
PSC63W18L65 d18 H65	347,00
PSC63W20L65 d20 H65	347,00
PSC63W25L80 d25 H80	357,00
PSC63W32L90 d32 H90	366,00
PSC63W40L100 d40 H100	a Richiesta


Serie di pinze ER su zoccolo	
 SER08001 ER08 1-5 - 9 pz	131,70
SER11001 ER11 1-7 - 13 pz	114,00
SER16001 ER16 1-10 - 10 pz	87,80
SER20001 ER20 2-13 - 12 pz	99,50
SER25001 ER25 2-16 - 15 pz	123,00
SER32001 ER32 3-20 - 18 pz	189,90
SER40001 ER40 4-26 - 23 pz	257,80

Serie di pinze ER in valigetta metallo	
 SER08001VA ER08 1-5 - 9 pz	147,40
SER11001VA ER11 1-7 - 13 pz	123,20
SER16001VA ER16 1-10 - 10 pz	101,80
SER20001VA ER20 2-13 - 12 pz	108,90
SER25001VA ER25 2-16 - 15 pz	132,30
SER32001VA ER32 3-20 - 18 pz	198,90
SER40001VA ER40 4-26 - 23 pz	266,80

Tasselli di trascinamento	
 TASSRI16TF Tipo 16TF	9,30
TASSRI22TF Tipo 22TF	9,80
TASSRI27TF Tipo 27TF	13,48
TASSRI32TF Tipo 32TF	8,94
TASSRI40TF Tipo 40TF	16,64

Tiranti DIN 7388/2 A	
 TC4015 ISO40 M16 - forato	7,70
TC4015NF ISO40 M16 - non forato	7,70
TC5015 ISO50 M24 - forato	11,70
TC5015NF ISO50 M24 - non forato	11,70

Viti a croce	
 VICROM08 M8	9,80
VICROM10 M10	9,80
VICROM12 M12	11,54
VICROM16 M16	15,38
VICROM20 M20	19,24

Viti per Cono Morse	
 VITICM1F M6	1,06
VITICM2F M10	2,00
VITICM3F M12	2,60
VITICM4F M16	11,38
VITICM5F M20	16,00

Azzeratori con magneti incorporato	
 ZDI50 h50 mm risoluzione 0,01 mm	275,00
 ZDI100 h100 mm risoluzione 0,01 mm	616,00